

Typhoon Guide for Andersen AFB Personnel

Installation Office of Emergency Management

671-366-3113



U.S. AIR FORCE

This guide provides essential information about typhoons and how to prepare for them while stationed at Andersen Air Force Base, Guam.

TABLE OF CONTENTS

Typhoon Basics	P3
TCCOR.....	P5
History of Typhoons in Guam	P6
Lessons Learned	P8
How to Be Prepared	P9
Recovery Process	P11
Emergency Contacts.....	P13

*Dedicated to Colonel Sheri Kraus. Thank you for your hard work
and dedication to the 36th Mission Support Group.*

Si Yu'us Ma'ase



Online Resources

US National Weather Service Guam - <https://www.weather.gov/gum/>

Andersen AFB - <https://www.facebook.com/Andersen36WG/>

Typhoons - <https://www.ready.gov/hurricanes>

Flooding - <https://www.ready.gov/floods>

Tsunami - <https://www.ready.gov/tsunamis>

Shelter Guide – Call 366-3113 or email 36ces.cex@us.af.mil for a copy

Facility Manager Typhoon Checklist – CE Customer Service 366-2916/17/18

Air Force Claims - <https://claims.jag.af.mil/>

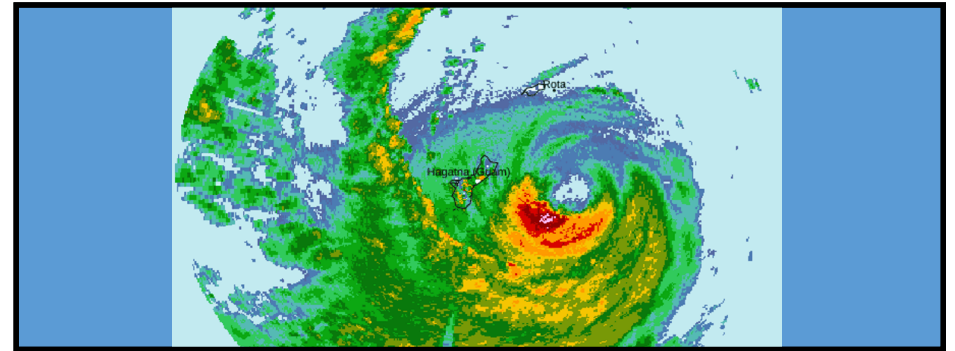
Navy Claims - <http://www.jag.navy.mil/>

Wind Radar - <https://www.windy.com/>

Air Force Be Ready - <http://www.beready.af.mil/>

American Red Cross (671-472-6217) – https://www.redcross.org/local/guam.html?CID=organic_gmb_list

TYPHOON BASICS



What is a typhoon? Key characteristics of typhoons

A typhoon is a type of tropical cyclone, a powerful rotating storm system that forms over warm ocean waters. In the Western Pacific, these storms are called typhoons, while in the Atlantic and Eastern Pacific

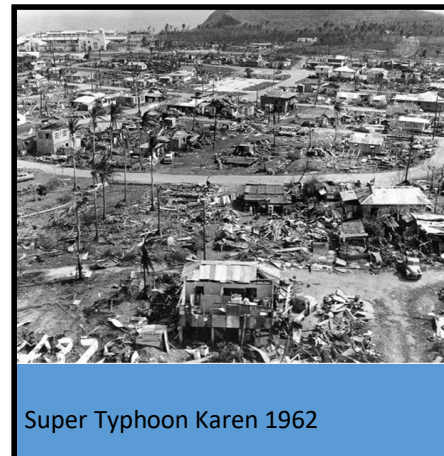
Low pressure center: The "eye" of the storm, characterized by calm conditions.

Spiral rainbands: Bands of thunderstorms spiraling around the eye, bringing heavy rain and strong winds.

Storm surge: An abnormal rise in sea level caused by powerful winds pushing water towards the shore.

High winds: Typhoons can produce winds exceeding 150 mph, capable of causing significant damage.

Heavy rainfall: Typhoons can dump massive amounts of rain, leading to flooding and landslides.

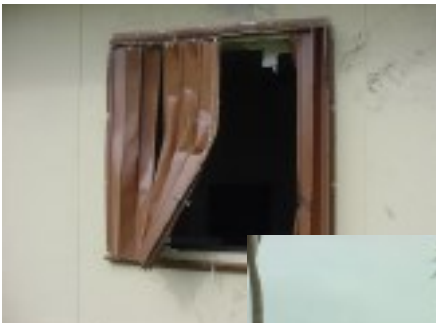


Typhoon Season in Guam

Guam is located in "Typhoon Alley" and is highly susceptible to these storms. Typhoon season typically runs from June to November, with the highest frequency occurring between August and October.

Typhoons are categorized by their wind speed using the Saffir-Simpson Hurricane Wind Scale

Category 1 (74-95 mph): Very dangerous winds will produce some damage.
Category 2 (96-110 mph): Extremely dangerous winds will cause extensive damage.
Category 3 (111-129 mph): Devastating damage will occur.
Category 4 (130-156 mph): Catastrophic damage will occur.
Category 5 (157 mph or higher): Catastrophic damage will occur.



EMERGENCY CONTACTS

Off/On Base Emergency – 911

Off/On Base Emergency – 911

Housing Damage – 366-6240 (FH) / 366-9572 (UH)

Naval Hospital ER –344-9232

Facility Damage – 366-2916/2917/2918

Naval Hospital – 344-9340

Command Post – 366-2981

Gate (Visitor Control Center) – 366-4320

Law Enforcement Desk – 366-2910

DoDEA Schools Contact Information

Guam High School- 344-7410

McCool Elementary/Middle School- 339-8676

Andersen Elementary School- 366-1511

Andersen Middle School-366-3880

Child Development Center- 366-1601

Your Role in Recovery

Be Patient: Full recovery takes time. Be patient with the process and understand that challenges will arise along the way.

Follow Instructions: Adhere to directives issued by Andersen AFB and local authorities regarding safety, curfews, restricted areas, and access to services.

Help Your Community: Volunteer your time and skills to assist with cleanup efforts, donate to relief organizations, or offer support to neighbors in need.

Mental Health: Typhoons can be traumatic events. It's essential to take care of your mental well-being. Reach out to support networks, mental health professionals, or spiritual advisors if you need help coping with stress, anxiety, or grief.

Emergency Family Assistance Center (EFAC): Provide services to help inform and assist in filing claims and getting recovery services.

Remember, recovery is a collective effort. By working together, supporting each other, and demonstrating resilience, the Andersen AFB community and the people of Guam will rebuild and emerge stronger from the challenges posed by typhoons.



TCCOR



TCCOR Levels

The Tropical Cyclone Conditions of Readiness (TCCOR) system is used by Andersen AFB to indicate the severity of an approaching typhoon and dictate base operations and personnel actions.

TCCOR 3: Destructive winds are possible within 48 hours.

TCCOR 2: Destructive winds are possible within 24 hours.

TCCOR 1: Destructive winds are possible within 12 hours.

TCCOR 1E (Emergency): Destructive winds are possible within 12 hours.

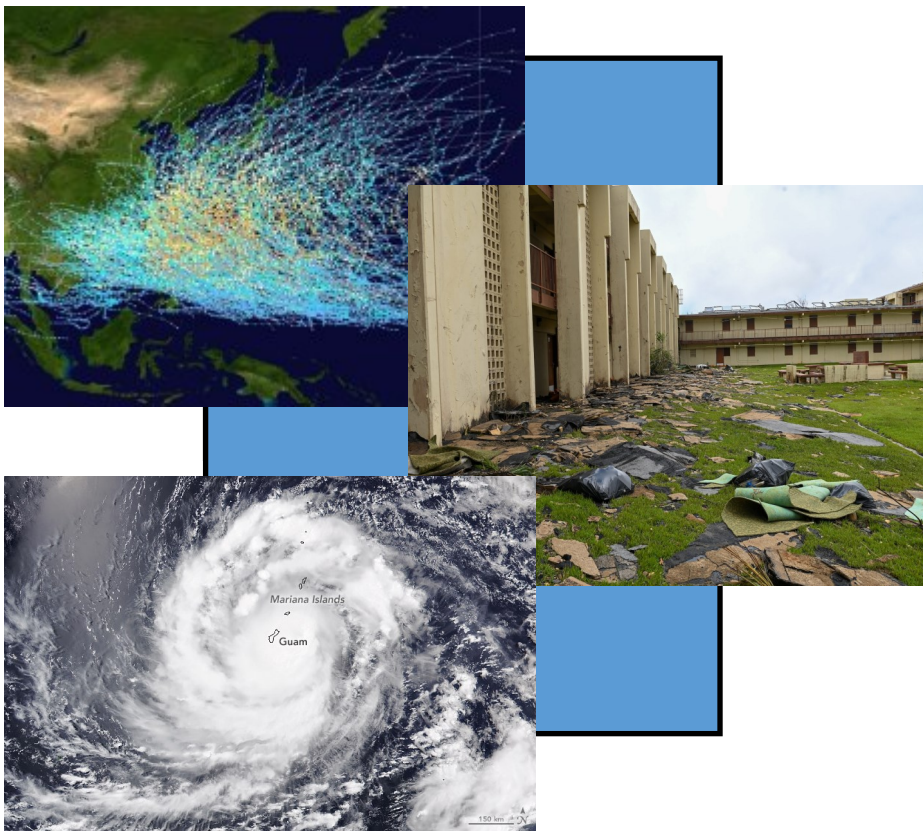
TCCOR 1C (Caution): Destructive winds are occurring or imminent. Seek shelter immediately.

TCCOR 1R (Recovery): Destructive winds are no longer a threat. Recovery operations are underway. Only key military personnel are authorized movement.

TCCOR All Clear: Storm has passed, all major recovery operations are complete. Movement is authorized.

HISTORY OF TYPHOONS IN GUAM

Guam has a long and tumultuous history with typhoons. The island's location in Typhoon Alley makes it a prime target for these powerful storms.



RECOVERY PROCESS

The recovery process after a typhoon typically involves several phases:

Assessment: Authorities will assess the extent of damage to infrastructure, essential services, and private property. This assessment helps determine the resources and time required for recovery.

Restoration of Essential Services: Priority will be given to restoring critical infrastructure like power, water, communication lines, and healthcare facilities.

Debris Removal: Organized efforts will be undertaken to clear debris from roads, public spaces, and residential areas.

Housing Assistance: Support will be provided to those displaced from their homes due to damage. This may involve temporary shelters, financial aid, or assistance with finding alternative housing.

Economic Recovery: Efforts will be made to support businesses and industries impacted by the typhoon, helping them reopen and recover financially.



During Typhoon Season:

Stay Informed: Pay close attention to weather updates and instructions from Andersen AFB.

Secure Your Belongings: Bring outdoor furniture, grills, and other loose objects inside.

Fuel Up Your Vehicles: Ensure your vehicles have a full tank of gas.

Charge Electronic Devices: Keep phones, laptops, and other devices fully charged.

During a Typhoon Warning:

Follow Instructions: Adhere to all instructions and advisories issued by Andersen AFB and local authorities.

Seek Shelter: If ordered to evacuate, do so immediately and proceed to designated shelters.

Stay Indoors: Stay away from windows and doors during the storm.

After a Typhoon:

Stay Informed: Continue monitoring official communications for updates and instructions.

Be Cautious: Be aware of downed power lines, debris, and flooding.

Check on Neighbors: Assist those who may need help, especially the elderly and disabled.

Document Damage: Take photos of any damage to your property for insurance purposes.

Significant Typhoons:

1900 - Super Typhoon: This unnamed storm remains the deadliest in Guam's history, claiming over 40 lives and causing widespread destruction.

1962 - Typhoon Karen: A Category 5 super typhoon, Karen devastated the island, destroying most buildings and causing significant economic hardship.

1976 - Typhoon Pamela: This Category 4 storm inflicted severe damage to infrastructure and agriculture.

1997 - Typhoon Paka: Packing winds over 155 mph, Paka caused extensive damage to Andersen AFB and other parts of the island.

2002 - Super Typhoon Pongsona: This powerful typhoon caused widespread power outages and significant damage to homes and businesses.

2023– Typhoon Mawar: This Category 4 storm was the strongest in decades. Rocking the island of Guam causing widespread damage and power outages.

LESSONS LEARNED

Guam's history with typhoons has underscored the importance of:

Preparedness: Having a plan in place and being ready to act quickly is crucial.

Infrastructure improvements: Building codes and infrastructure have been strengthened to withstand stronger storms.

Community resilience: The people of Guam have shown remarkable resilience in the face of adversity, coming together to rebuild and support each other.



BE PREPARED

While typhoon season is technically June-December, in Guam typhoons can happen year round. Being prepared for a typhoon is crucial for your safety and well-being. Here's what you need to do:

Develop a Family Emergency Plan: Establish meeting points, communication methods, and evacuation routes.

Prepare a Disaster Supply Kit: Include water, non-perishable food, flashlights, batteries, a first-aid kit, important documents, and cash.

Secure your home: Close storm shutters, ensure weather seal in windows and doorways are functional and bring loose objects indoors.

Know Your Evacuation Zone: Familiarize yourself with evacuation routes and shelters.

Stay Informed: Monitor weather reports and official Andersen AFB communications channels. Insure information in notification systems are up to date, AFPAAS, ATHOC Etc.

