

April
2026



Final

Description of the Proposed Action and Alternatives

for the Environmental Assessment Addressing
Expansion of the 554th Red Horse Squadron Quarry
at Andersen Air Force Base, Guam

*Department of the Air Force
Pacific Air Forces, 36th Civil Engineer Squadron
Joint Region Marianas
Air Force Civil Engineering Center
Andersen Air Force Base*



ACRONYMS AND ABBREVIATIONS

AFB	Air Force Base
AFCEC	Air Force Civil Engineer Center
AFCEC/CIE	Air Force Civil Engineer Center, Environmental Impact Analysis Process Division
AFI	Air Force Instruction
CAHA	Guam Council on the Arts and Humanities Agency
CE	Civil Engineering
CES/CEIE	Civil Engineer Squadron, Environmental Flight
CFR	Code of Federal Regulations
DAF	Department of the Air Force
DON	Department of the Navy
DOPAA	Description of the Proposed Action and Alternatives
EA	Environmental Assessment
EIAP	Environmental Impact Analysis Process
EO	Executive Order
FONSI	Finding of No Significant Impact
GMK	Guam Micronesian Kingfisher
GU	Guam
IRP	Installation Restoration Program
JRM	Joint Region Marianas
MOA	Memorandum of Agreement
MUNS Area	Munitions Storage Area
NEPA	National Environmental Policy Act
NHPA	National Historic Preservation Act
NOA	Notice of Availability
NWF	Northwest Field
PACAF	Pacific Air Forces
RHS	Red Horse Squadron
SHPO	State Historic Preservation Officer
SLUC	Site/Land Use Control
T&E	Threatened and Endangered
U.S.	United States
USDA	United States Department of Agriculture
USFWS	United States Fish and Wildlife Service
WG	Wing

COVER SHEET

FINAL DESCRIPTION OF THE PROPOSED ACTION AND ALTERNATIVES FOR THE ENVIRONMENTAL ASSESSMENT ADDRESSING EXPANSION OF THE 554TH RED HORSE SQUADRON QUARRY AT ANDERSEN AIR FORCE BASE, GUAM

Responsible Agencies: Department of the Air Force (DAF), Pacific Air Forces, 36th Civil Engineer Squadron, Environmental Flight (PACAF 36 CES/CEIE), Joint Region Marianas (JRM), Air Force Civil Engineering Center (AFCEC), Andersen Air Force Base (AFB).

Cooperating Agency: Department of the Navy (DON).

Affected Location: Andersen AFB, Guam.

Proposed Action: 554th Red Horse Squadron (RHS) Quarry Expansion at Andersen AFB.

Report Designation: Final Description of the Proposed Action and Alternatives (DOPAA).

Abstract: This DOPAA was developed in compliance with the DAF's Environmental Impact Analysis Process (EIAP) in support of PACAF 36 CES/CEIE, JRM, AFCEC, and Andersen AFB. It supports a proposal by Andersen AFB to expand the 554 RHS quarry to support current and future construction projects and training and operational requirements.

PRIVACY ADVISORY

The Environmental Assessment (EA) will be made available for public review and comment in accordance with the National Environmental Policy Act (NEPA) of 1969, as amended (42 United States Code [U.S.C.] Parts 4321–4370h), and the Department of War (DoW) NEPA Regulation (32 CFR Part 236), which establishes NEPA procedures for all DoW Components, including the Department of the Air Force (DAF).

Under NEPA, the public is provided an opportunity to review and comment on DAF's analysis of the potential environmental effects of the Proposed Action and alternatives. Public input improves the quality of environmental review and supports informed agency decision-making. Written comments submitted during the public comment period may be included in the Final EA. As required by law, all substantive comments received will be addressed in the Final EA, and the Final EA will be made available to the public. Providing personal information as part of a public comment is voluntary. Any personal identifying information supplied (such as a home address, telephone number, or email address) will not be published in the Final EA. Only the commenter's name and the text of the comment may be made publicly available.

The EA will comply with DoW page limits for EAs. The analytical portion of an EA must not exceed 75 pages, excluding appendices. The document will also comply with Section 508 of the Rehabilitation Act, which requires that electronic documents be accessible to individuals using assistive technologies. Due to inherent limitations associated with figures, maps, tables, and other graphical elements, accessibility for these items is provided through descriptive titles or alternative text where feasible.

TABLE OF CONTENTS

Acronyms and Abbreviations.....	Inside Front Cover
1.0 PURPOSE AND NEED FOR THE PROPOSED ACTION.....	1-1
1.1 INTRODUCTION	1-1
1.2 COOPERATING AGENCY	1-1
1.3 PROJECT DESCRIPTION	1-3
1.4 PURPOSE OF AND NEED FOR THE PROPOSED ACTION	1-3
1.5 DECISION TO BE MADE.....	1-5
1.6 INTERGOVERNMENTAL COORDINATION AND CONSULTATIONS .	1-5
1.6.1 Interagency and Intergovernmental Coordination and Consultations	1-5
1.6.2 Government to Government Coordination and Consultations.....	1-6
1.7 PUBLIC AND AGENCY REVIEW OF DRAFT EA	1-6
2.0 DESCRIPTION OF THE PROPOSED ACTION AND ALTERNATIVES.....	2-1
2.1 SELECTION STANDARDS.....	2-1
2.2 DETAILED DESCRIPTION OF THE ALTERNATIVES	2-1
2.2.1 Proposed Action.....	2-1
2.2.2 No Action Alternative.....	2-1
2.3 ALTERNATIVES CONSIDERED BUT ELIMINATED FROM FURTHER	
CONSIDERATION.....	2-3
2.3.1 1.4.1 Relocate Quarry to the Munitions Storage Area.....	2-3
2.3.2 1.4.2 Expanding the Former Civil Engineering Quarry	2-3
2.3.3 1.4.3 Reactivating/Expanding the Former Landfill Quarry.....	2-4

FIGURES

Figure 1-1. Andersen AFB Vicinity Map	1-2
Figure 1-2. Current 554 RHS Quarry and Proposed Expansion Area	1-4

APPENDICES

- A. Interagency and Intergovernmental Coordination for Environmental Planning and Public Involvement Materials**

THIS PAGE INTENTIONALLY LEFT BLANK.

1.0 PURPOSE AND NEED FOR THE PROPOSED ACTION

1.1 INTRODUCTION

Andersen Air Force Base (AFB) is located on the northern plateau of Guam and is the westernmost territory of the United States (U.S.). The installation covers roughly 20,000 acres within the village of Yigo and sits on a limestone bluff overlooking the Pacific Ocean (see **Figure 1-1**). Established in 1944, Andersen AFB has served as a key operating location for U.S. forces in the Indo-Pacific region for more than seven decades. The base is home to the 36th Wing (36 WG), which provides continuous forward presence, contingency response capabilities, and theater support across the Indo-Pacific area of responsibility. Rotational aircraft operating from Andersen AFB routinely include B-1B Lancers, B-52H Stratofortresses, B-2A Spirits, KC-135 Stratotankers, and various fighter, mobility, and support aircraft. The installation supports a wide range of missions, including bomber task force deployments, air mobility operations, intelligence and reconnaissance activities, and joint and coalition training.

Several organizations play key roles in supporting operations and installation management at Andersen AFB. The Pacific Air Forces' 36th Civil Engineer Squadron, Environmental Flight (36 CES/CEIE), oversees the installation's environmental programs and provides technical expertise on natural resources, cultural resources, and environmental compliance matters. Joint Region Marianas (JRM), the region's installation management authority, is responsible for coordinating certain real property functions, regional support services, and broader interagency and community coordination affecting military activities in Guam. At the enterprise level, the Air Force Civil Engineer Center's Environmental Impact Analysis Process (EIAP) Division (AFCEC/CIE) supports environmental planning and engineering functions across the Department of the Air Force (DAF). Together, these organizations contribute to the installation's ability to carry out its mission while maintaining effective environmental management and coordination across the region.

As one of only a few major U.S. airbases in the Western Pacific, Andersen AFB remains central to maintaining regional stability, supporting humanitarian assistance and disaster response operations, and ensuring that U.S. and allied forces can operate throughout the region when required.

1.2 COOPERATING AGENCY

The Department of the Navy (DON) is serving as a Cooperating Agency for this Environmental Assessment (EA). JRM provides installation management and regional support for both Andersen AFB and Naval Base Guam, and the Navy maintains jurisdiction over certain real property, environmental programs, and operational activities that are interrelated with DAF actions in Guam. Because the Proposed Action occurs within the JRM area of responsibility and has the potential to interact with shared infrastructure, natural resources, cultural resources, and regional environmental compliance obligations, the Navy has relevant expertise and authority that contribute to the environmental review.

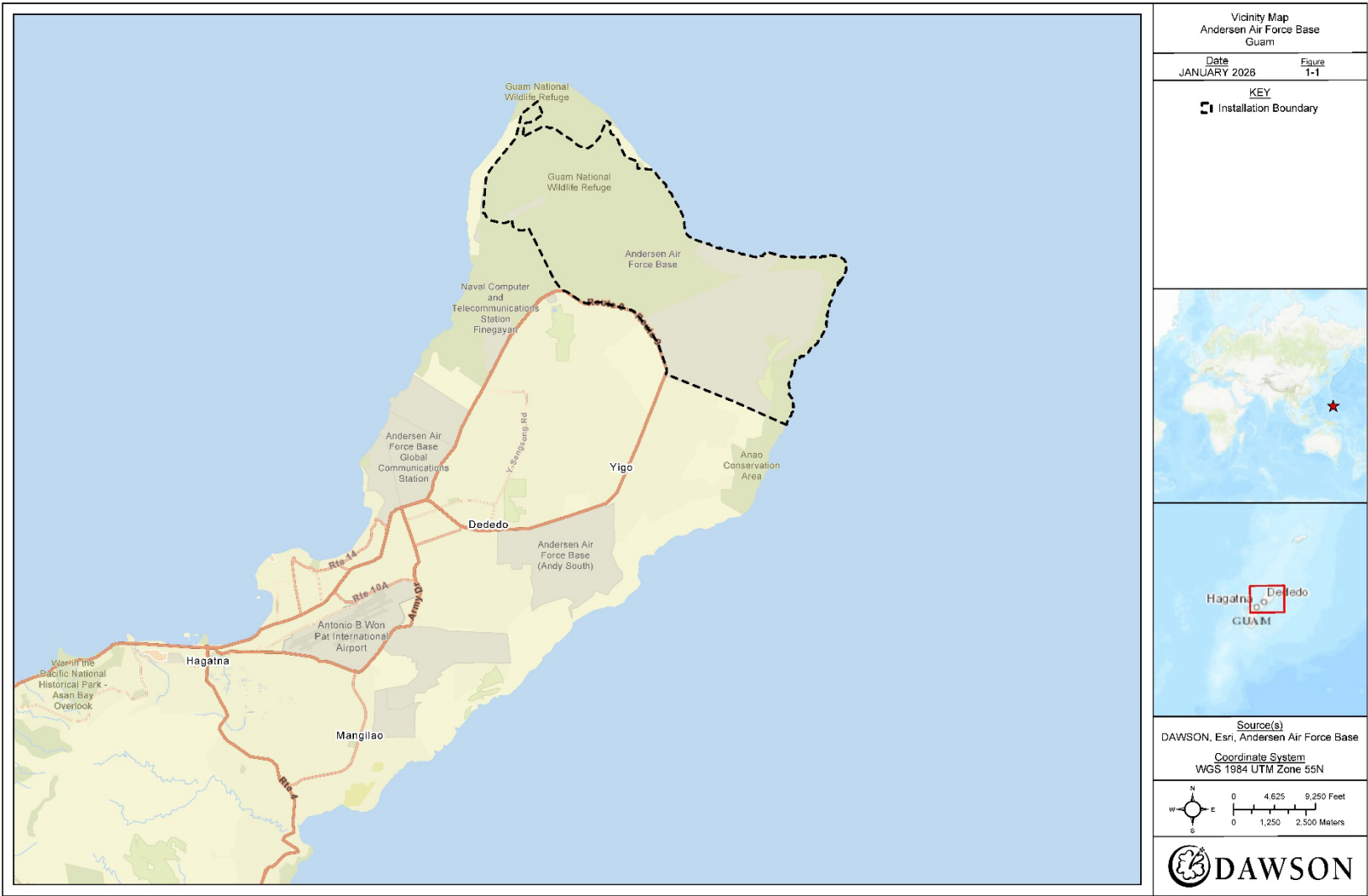


Figure 1-1. Andersen AFB Vicinity Map

As a Cooperating Agency, the DON participates in the environmental planning process through review of technical materials, identification of issues within its purview, coordination on shared environmental and operational considerations, and verification that Navy responsibilities under applicable federal environmental statutes are addressed. The DAF acts as the Lead Agency responsible for preparing the EA, determining the adequacy of the analysis, and issuing a Finding of No Significant Impact (FONSI) or undertaking further National Environmental Policy Act (NEPA) review, while the Navy provides input and cooperation consistent with its roles under NEPA and Department of Defense policy.

1.3 PROJECT DESCRIPTION

This Description of the Proposed Action and Alternatives (DOPAA) provides the framework for the EA by outlining the proposed activities associated with the action under consideration. The EA serves as a planning and decision-making tool to ensure that Andersen AFB implements the Proposed Action in a manner consistent with applicable federal, territorial, and local environmental requirements and with DAF standards for environmental stewardship. This DOPAA supports a proposal by the DAF to expand the 554th Red Horse Squadron (RHS) quarry to meet current and future construction needs and training and operational requirements at Andersen AFB (see **Figure 1-2** and **Section 2.2.1**).

1.4 PURPOSE OF AND NEED FOR THE PROPOSED ACTION

The purpose of the Proposed Action is to provide the 554 RHS with a reliable, sustainable, and adequate source of construction aggregate materials to support ongoing and future construction projects, maintenance activities, and training and operational requirements at Andersen AFB. Expanding the existing quarry would ensure that the 554 RHS can continue to produce the aggregate necessary for airfield pavement projects, facility and infrastructure improvements, military construction support, and unit-specific training activities that require material production and heavy-equipment operation. In addition to supporting routine operations, the 554 RHS quarry also serves as a secondary source of fill material during contingency operations, enabling rapid runway repair and supporting emergency response capabilities.

The Proposed Action is needed because the 554 RHS has reached the operational capacity of its existing quarry footprint and can no longer safely or efficiently excavate sufficient quantities of construction aggregate to meet current and projected mission demands. Quarry expansion is critical for maintaining production capability and ensuring that the unit can continue to support DAF construction and repair requirements across the installation. Adequate aggregate supply is also essential for sustaining the 554 RHS's mission to provide heavy construction, rapid engineering response, airfield damage repair, and expeditionary support throughout the Indo-Pacific region.

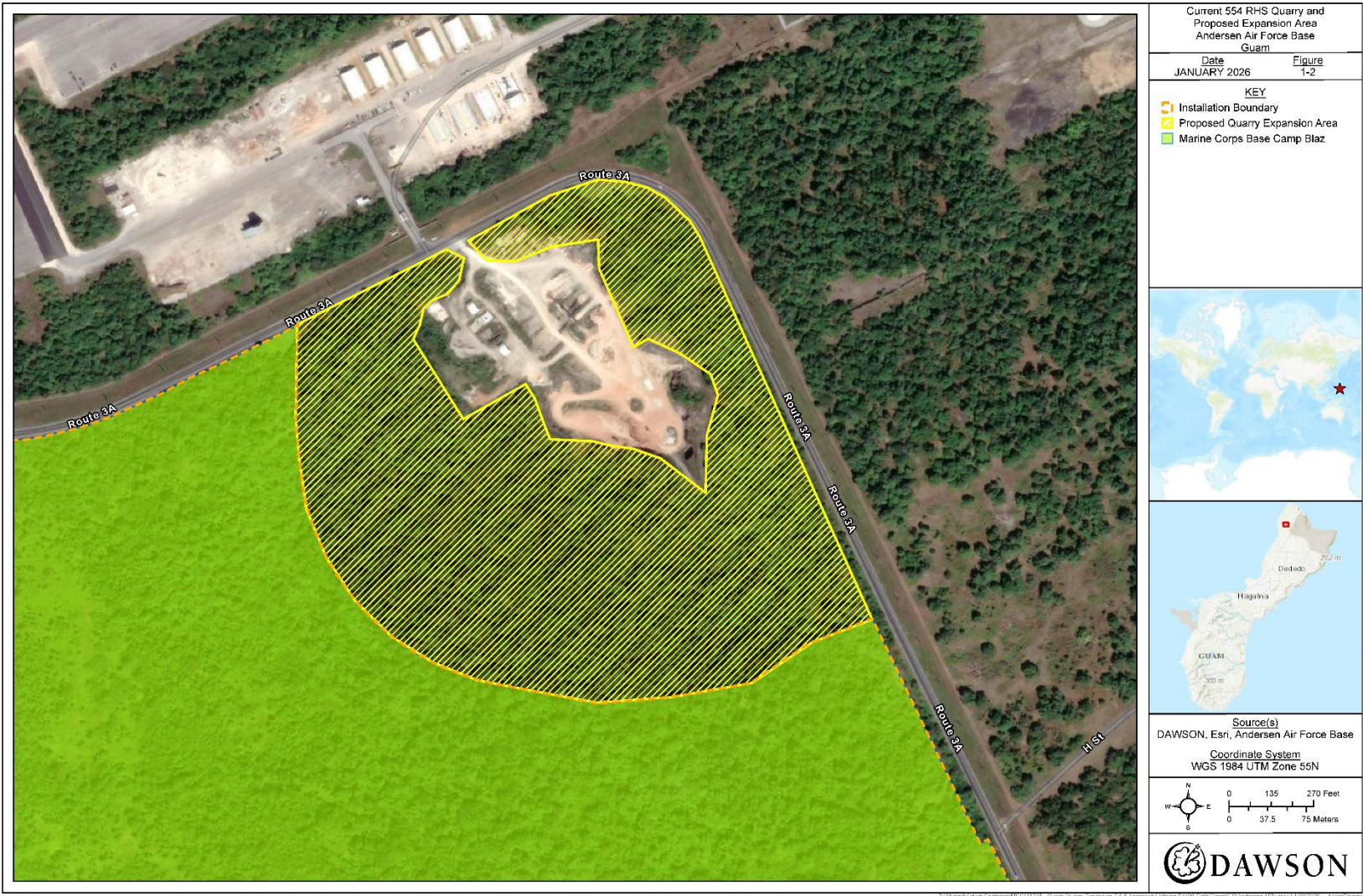


Figure 1-2. Current 554 RHS Quarry and Proposed Expansion Area

Without expansion of the existing quarry, the 554 RHS would be unable to maintain required readiness levels, support essential hands-on training, or execute planned DAF construction, repair, or contingency response activities in a timely, mission-effective, and cost-efficient manner. Continued reliance on the current quarry limits would negatively affect the unit's ability to meet operational timelines, increase dependence on off-island materials, restrict rapid-runway-repair capability during contingency events, and constrain critical training opportunities necessary for maintaining operational capability in support of Andersen AFB and broader DAF mission requirements.

1.5 DECISION TO BE MADE

The EA will evaluate whether the Proposed Action would result in significant impacts on the environment. If significant impacts are identified, Andersen AFB would undertake mitigation to reduce impacts to below the level of significance, undertake the preparation of an Environmental Impact Statement addressing the Proposed Action, or abandon the Proposed Action. If significant impacts are not identified, then the EA would be finalized and a FONSI would be signed. The decision would be made by the approving official and could incorporate the Proposed Action, its alternatives, or any combination of the Proposed Action and alternatives. The EA will be prepared in accordance with NEPA, as amended, (42 United States Code Section 4321 et seq.) and the DAF EIAP Regulations at 32 Code of Federal Regulations (CFR) Part 989.

1.6 INTERGOVERNMENTAL COORDINATION AND CONSULTATIONS

1.6.1 Interagency and Intergovernmental Coordination and Consultations

EO 12372, *Intergovernmental Review of Federal Programs*, as amended by EO 12416, requires federal agencies to provide opportunities for consultation by elected officials of state and local governments that would be directly affected by a federal proposal. In compliance with NEPA, Andersen AFB will notify relevant stakeholders about the Proposed Action and alternatives (see **Appendix A** for all stakeholder coordination materials). The notification process will provide these stakeholders the opportunity to cooperate with Andersen AFB and provide comments on the Proposed Action and alternatives.

Per the requirements of Section 106 of the National Historic Preservation Act (NHPA) and implementing regulations (36 CFR Part 800), Section 7 of the Endangered Species Act and implementing regulations (50 CFR Part 17) including the Migratory Bird Treaty Act, findings of effect and a request for concurrence will be transmitted to the State Historic Preservation Officer (SHPO) and the United States Fish and Wildlife Service (USFWS). A brief summary of comments received will be provided in the EA and all correspondence with the SHPO and USFWS will be included in **Appendix A**. Additionally, correspondence regarding the findings, concurrence, and resolution of any adverse effect will be included in **Appendix A**.

1.6.2 Government to Government Coordination and Consultations

Section 106 of the National Historic Preservation Act (NHPA) and its implementing regulations (36 CFR Part 800) require federal agencies to consider the effects of their undertakings on historic properties and to consult with appropriate parties during the review process. Consultation typically includes coordination with the Guam SHPO, local government representatives, and any federally recognized tribes or Native Hawaiian Organizations that may ascribe traditional, cultural, or religious significance to properties within the area of potential effects.

For undertakings in Guam, consultation is conducted in accordance with NHPA requirements and with sensitivity to the island's Indigenous CHamoru cultural heritage and historic resources. Although there are no federally recognized tribes located in Guam, the DAF consults with the SHPO and engages local stakeholders, cultural practitioners, and other interested parties, as appropriate, to identify historic properties and potential effects. Federally recognized tribes with ancestral or cultural interest in the region, if identified, will also be invited to participate in consultation consistent with 36 CFR Part 800.

Consultation letters and supporting materials will be provided to the SHPO and any other consulting parties to initiate Section 106 review for the proposed undertakings described in this EA. All correspondence and documentation related to Section 106 coordination are included in **Appendix A**.

1.7 PUBLIC AND AGENCY REVIEW OF DRAFT EA

A Notice of Availability (NOA) for the Draft EA will be published in both the *Pacific Daily News* and *Guam Daily Post*, announcing the availability of the Draft EA. Letters will be provided to relevant federal, state, and local agencies and those with cultural interests informing them that the Draft EA is available for review. The publication of the NOA will initiate a 30-day comment period. Copies of the Draft EA will be made available for review at the following libraries:

Hagåtña Public Library/Nieves M. Flores
Memorial Library
15 Judge Sablan Street
Hagåtña, GU 96910

Dededo Branch Library
In Harmon Loop
Dededo, GU 96929

A copy of the Draft EA will also be made available for review online at <https://www.andersen.af.mil/Environment/> under the Public Affairs Media Operations tab. At the closing of the public review period, applicable comments from the general public and interagency and intergovernmental coordination and consultation will be incorporated into the analysis of potential environmental impacts performed as part of the EA, where applicable, and included in **Appendix A** of the Final EA.

2.0 DESCRIPTION OF THE PROPOSED ACTION AND ALTERNATIVES

2.1 SELECTION STANDARDS

The scope and location of each project and, where applicable, their alternatives, will undergo extensive review by Andersen AFB personnel, local government agencies, and supporting installation and DAF staff specialists. Potential alternatives were evaluated against the following selection standards:

- **Selection Standard 1:** The alternative(s) must be consistent with all Andersen AFB internal planning documents and zoning requirements, applicable installation architectural compatibility guides, and relevant legal and regulatory requirements, and must accommodate applicable, known man-made and natural development constraints (e.g., Environmental Restoration Program sites, protected plant or animal species habitat, known cultural resources, or floodplains—the relevant constraints vary depending on the project).
- **Selection Standard 2:** The alternative(s) must avoid and/or mitigate direct and indirect, adverse impacts on safety, cultural or natural resources, or other environmental constraints, such as impacts on an environmental restoration site.
- **Selection Standard 3:** The alternative(s) must make as much use as possible of existing land and facilities, avoid creating or maintaining redundant space or infrastructure, avoid or minimize operational inefficiencies, and represent the most cost-effective and sustainable alternative.
- **Selection Standard 4:** The alternative(s) must meet the purpose and need of the Proposed Action.
- **Selection Standard 5:** The alternative(s) must maintain or improve the quality of life enjoyed by personnel and dependents at Andersen AFB.

2.2 DETAILED DESCRIPTION OF THE ALTERNATIVES

2.2.1 Proposed Action

Under the Proposed Action, Andersen AFB would expand the existing 554 RHS quarry to provide a reliable and sustainable source of construction aggregate needed to support installation development, operational requirements, maintenance activities, and mission-essential training. The expansion would allow the unit to access additional limestone reserves, maintain continuous aggregate production capacity, and meet projected material demands associated with airfield improvements, facility construction and repair, and engineering training requirements.

The Proposed Action would enlarge the current quarry boundary by approximately 16 acres, increasing the operational footprint to expose new extraction areas. Areas used for stockpiles, staging zones, and haul routes would be expanded by approximately 37 acres. These expansion activities would include clearing vegetation within the proposed limits, grubbing and removing overburden (estimated depth of 2.5 feet), and preparing

new working faces for excavation. Once the expansion area is opened, controlled excavation would occur through blasting, mechanical breaking, ripping, or other earthmoving techniques appropriate for the underlying limestone formations. Quarry development is anticipated to reach a maximum excavation depth of approximately 25 feet, or until geotechnical or operational limits are reached.

Based on the assumed excavation depth minus estimated overburden removal, the expansion area could yield on the order of several hundred thousand cubic yards of recoverable aggregate material. Using a conservative estimate of roughly 7 yards of recoverable vertical material across 16 acres (4,840 square yards per acre), the volume would be approximately 540,000 cubic yards. Final production quantities would depend on in-situ rock quality, recoverability rates, and geotechnical constraints verified during active quarry development.

Quarried rock would be processed on site using existing or upgraded crushing, screening, and sorting equipment to produce aggregate of various sizes suitable for construction, repair, and training uses. The project would also involve reconfiguring or expanding stockpile areas, staging zones, equipment laydown areas, and internal haul routes to support efficient and safe material movement within the quarry. All activities would occur entirely within the confines of the quarry.

Operational improvements may include constructing or adjusting safety berms and implementing additional stormwater and erosion control measures such as drainage swales, retention features, energy-dissipation structures, or sediment barriers. Stormwater controls would be designed to accommodate anticipated runoff volumes consistent with final grading and drainage patterns.

Daily support activities would continue to include operation of heavy equipment (e.g., excavators, loaders, haul trucks), material hauling (anticipated haul distances within quarry boundaries of approximately 200 feet), blasting (as required), aggregate processing, fuel and equipment maintenance support, and stockpile management. The expanded quarry area would also enable continued hands-on engineering training involving excavation, material production, equipment operation, and other engineering tasks central to the unit's mission. Training throughput would increase from zero to approximately 52 training events per year.

Overall, the Proposed Action would ensure that Andersen AFB maintains a consistent and locally available aggregate source, enabling timely construction and maintenance activities while supporting the 554 RHS's ability to conduct mission-essential engineering and contingency operations.

2.2.2 No Action Alternative

Under the No Action Alternative, Andersen AFB would not expand the existing 554 RHS quarry. Quarry operations would remain limited to the current, constrained footprint, and the unit would be unable to increase production to meet installation, construction, maintenance, operational, or training demands. Existing capacity limitations and operational constraints would persist, reducing the 554 RHS's ability to produce sufficient

quantities of aggregate material to support ongoing and planned mission requirements. As mission needs continue to grow, the lack of additional aggregate resources would result in reduced readiness, increased reliance on off-island material sources, higher project costs and delays, and diminished capability to support DAF construction and contingency response activities.

The DAF EIAP requires consideration of the No Action Alternative (32 CFR Part 989.8[d]); therefore, this alternative will be carried forward for detailed analysis in the EA. However, the No Action Alternative would not meet the purpose of or need for the Proposed Action as described in **Section 1.3**.

2.3 ALTERNATIVES CONSIDERED BUT ELIMINATED FROM FURTHER CONSIDERATION

The following alternatives were considered but eliminated from further consideration based on the selection standards outlined in **Section 2.2** and other reasons as explained below.

2.3.1 Relocate Quarry to the Munitions Storage Area

Establishing a new quarry within or adjacent to the Munitions Storage Area (MUNS Area) was considered because the location contains suitable limestone bedrock and would allow haul routes to remain entirely on base. Although the site offered logistical advantages, quarrying in this location would conflict directly with explosive safety quantity-distance requirements associated with munitions storage operations. These requirements prohibit blasting, heavy excavation, and other intrusive activities in close proximity to ordnance, creating an unavoidable operational safety conflict. In addition, the MUNS Area includes sensitive natural resources and potential habitat for federally protected species, which raises the likelihood of adverse environmental effects and regulatory constraints. Groundwater wells are also present in this vicinity, adding another layer of protection and restriction, as quarry development could introduce risks to water quality and wellhead safety. Because of these combined operational, environmental, and safety limitations—including explosive safety constraints, endangered species considerations, and the presence of groundwater wells—the MUNS Area was eliminated from further consideration as a viable alternative.

2.3.2 Expanding the Former Civil Engineering Quarry

Expanding the former Civil Engineering (CE) Quarry was considered because the area is already disturbed, contains aggregate material suitable for construction, and historically supported similar activities. However, the former CE Quarry is currently designated for habitat enhancement and long-term natural resource protection, which makes expansion inconsistent with current land-use restrictions and conservation management goals. Furthermore, the area includes several known Installation Restoration Program (IRP) sites. These sites present potential contamination concerns that would require substantial investigation, remediation, or both before excavation or blasting could occur. Expansion into this area would also extend into land associated with the Guam Micronesian Kingfisher Memorandum of Agreement (GMK MOA) conservation area, creating

additional land-use conflicts. Operationally, quarrying at this location is inefficient because aggregate would need to be hauled off base and transported to locations such as Northwest Field (NWF). Off-base hauling introduces safety concerns, increases traffic conflicts, and adds time and cost to construction and maintenance operations. Given the combination of incompatible land use, the presence of IRP sites, conflicts with GMK MOA conservation land, and the operational inefficiencies associated with off-base hauling, the CE Quarry expansion alternative was eliminated from further analysis.

2.3.3 Reactivating/Expanding the Former Landfill Quarry

Reactivating or expanding the former Landfill Quarry was considered because the area is already disturbed and contains exposed rock material. However, its location near the airfield overrun area creates significant concerns for aircraft and airfield operations. Quarrying activities—particularly blasting, heavy truck movement, vibration, and dust generation—are incompatible with airfield safety requirements. The site is also located directly under the final approach path for runway 6R and the departure path for runway 24L, meaning that any blasting or heavy equipment use would occur beneath active flight corridors, resulting in substantial safety hazards.

Multiple IRP sites are present in this area as well, and the site's historical use as a landfill means that buried debris, refuse, and potential contamination are likely. Any excavation would therefore require extensive mitigation, investigation, or cleanup prior to use, significantly increasing cost and schedule impacts. As with the CE Quarry, hauling materials from the Landfill Quarry to operational areas such as NWF would require off-base transportation, thus reducing efficiency and increasing safety risks. The area is also adjacent to an active project site associated with the Guam Defense System, creating additional land-use conflicts and potential interference with ongoing mission-critical construction. Given these constraints—including proximity to the runway overrun area, location beneath active flight paths, safety issues associated with blasting near airfield operations, the presence of IRP sites and landfill debris, adjacency to Guam Defense System activities, and the inefficiency of off-base hauling—the Landfill Quarry alternative was eliminated from further consideration.

APPENDIX A

**INTERAGENCY AND INTERGOVERNMENTAL COORDINATION
FOR ENVIRONMENTAL PLANNING AND
PUBLIC INVOLVEMENT MATERIALS**

THIS PAGE INTENTIONALLY LEFT BLANK.

Appendix A

Interagency and Intergovernmental Coordination for Environmental Planning and Public Involvement Materials

Federal, State, and Local Agencies – Scoping Letter Distribution List

The Honorable James C. Moylan
Delegate, Guam
United States House of Representatives
228 Cannon House Office Building
Washington DC 20515-0001

The Honorable Lourdes A. Leon
Guerrero
Governor of Guam
Office of the Governor
P.O. Box 2950
Hagåtña Guam 96932

The Honorable Joshua F. Tenorio
Lieutenant Governor of Guam
Office of the Lieutenant Governor
P.O. Box 2950
Hagåtña Guam 96932

Mr. Jay Rojas
Director, Guam Washington Office
444 North Capitol Street, Suite 619
Washington DC 20001

Ms. Michelle C.R. Lastimoza
Administrator
Guam Environmental Protection Agency
17-3304 Mariner Avenue
Tiyan, Barrigada Guam 96913-1617

Mr. Dean Higuchi
Pacific Islands Contact Office
US Environmental Protection Agency,
Region 9
300 Ala Moana Boulevard, Room 5-511
Honolulu HI 96850

Mr. Tyler A. Cherry
Regional Environmental Officer
US Department of the Interior
Office of Environmental Policy and
Compliance, Pacific Region
300 Ala Moana Boulevard, Room 5-231
Honolulu HI 96850

Ms. Marisel Salas Matos
Field Supervisor, Guam Office
US Fish and Wildlife Service, Pacific
Islands
Guam National Wildlife Refuge
Route 3, Unit 17
Dededo Guam 96929

Mr. Chelsa M. Muña-Baleto
Director
Guam Department of Agriculture
163 Dairy Road
Mangilao Guam 96913

Mr. Eric M. Palacios
Administrator
Bureau of Statistics and Plans
Government of Guam
Office of the Director
P.O. Box 2950
Hagåtña Guam 96932

Mr. Roland U. Quitugua
Director
Guam Department of Parks and
Recreation
490 Chalan Palasyo
Aguada Guam 96910

Mr. Joab Siguenza
Acting Director
Guam Coastal Management Program
Bureau of Statistics and Plans
Government of Guam
P.O. Box 2950
Hagåtña Guam 96932

Mr. Victor Torres
Acting Director
Guam Historic Resources Division
Department of Parks and Recreation
490 Chalan Palasyo
Aguada Guam 96910

Ms. Charlayne M. J. Nelson
State Conservationist
USDA Natural Resources Conservation
Service
Pacific Islands Area Office
300 Ala Moana Boulevard, Room 4-118
Honolulu HI 96850

Mr. Bernard Breen
District Conservationist
USDA Natural Resources Conservation
Service – Guam Service Center
590 South Marine Corps Drive, Suite
305
Tamuning Guam 96913

Mr. Walt Christensen
Division Manager
Guam Waterworks Authority
Engineering Division
P.O. Box 3010
Hagåtña Guam 96932

Mr. Frank Leon Guerrero
Administrator
Guam Power Authority
P.O. Box 2977
Hagåtña Guam 96932

Mr. Vince Leon Guerrero, General
Manager
Guam International Airport Authority
Route 10A, Airport Road
Tamuning Guam 96913

Federal, State, and Local Agencies – Example Scoping Letter



**DEPARTMENT OF THE AIR FORCE
HEADQUARTERS 36TH WING (PACAF)
ANDERSEN AIR FORCE BASE GUAM**

20 March 2026

JESSE E. LANTZ, Lt Col, USAF
Commander, 36th Civil Engineer Squadron
Unit 14007
Andersen AFB Guam 96543-4003

The Honorable James C. Moylan
United States House of Representatives
228 Cannon House Office Building
Washington DC 20515-0001

Dear Representative Moylan

In accordance with the National Environmental Policy Act (NEPA) of 1969 and Department of the Air Force (DAF) NEPA regulations, the DAF is preparing an Environmental Assessment (EA) to evaluate potential environmental impacts associated with the expansion of the 554 Red Horse Squadron (RHS) quarry at Andersen Air Force Base, Guam, to support current and future construction projects and training and operational requirements. This project would support the 554 RHS by providing a reliable, sustainable, and adequate source of construction aggregate materials and ensure that the 554 RHS can continue to produce the aggregate needed for airfield pavement projects, facility and infrastructure improvements, military construction support, and unit-specific training activities that require material production and heavy-equipment operation. If the quarry is not expanded, 554 RHS would lack the materials needed to meet current and projected mission demands, and would not be able to continuously support DAF construction and repair requirements across the installation. Therefore, the 554 RHS would be unable to maintain required readiness levels, support essential hands-on training, or execute planned DAF construction, repair, or contingency response activities in a timely, mission-effective, and cost-efficient manner.

If you have additional information regarding impacts of the Proposed Action on the natural environment or other environmental aspects of which we are unaware, we would appreciate receiving such information for inclusion and consideration during the NEPA compliance process. A copy of the *Final Description of the Proposed Action and Alternatives for the Environmental Assessment Addressing Expansion of the 554th Red Horse Squadron Quarry at Andersen Air Force Base, Guam* is available at <https://www.andersen.af.mil/Environment>. A hardcopy can also be provided upon request. We look forward to and welcome your participation in this process. Please respond within 30 days of the date of this letter to ensure your concerns are adequately addressed in the EA.

Please send your written responses to Mr. Gerard Chargualaf, 36th Civil Engineer Squadron, ATTN: CEIE (EA Title) Unit 14007, APO, AP 96543-4007, or by email to raymond.chargualaf.1@us.af.mil. Thank you in advance for your assistance in this effort.

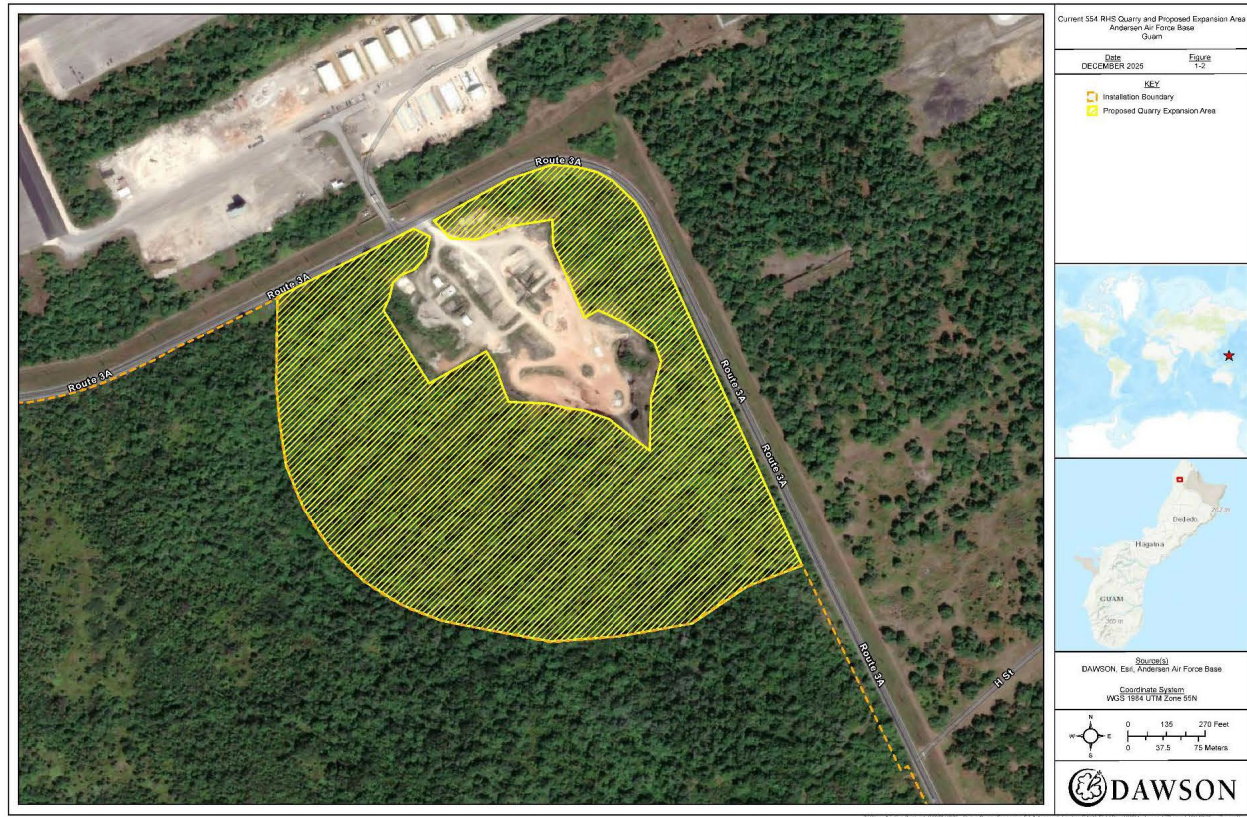
Sincerely

LANTZ.JESSE.E.1026
650450
JESSE E. LANTZ, Lt Col, USAF
Commander, 36th Civil Engineer Squadron



Digitally signed by
LANTZ.JESSE.E.1026650450
Date: 2026.02.18 17:04:49 +10'00'

Attachment:
Map of Proposed Project Location



Map of Proposed Project Location

State Historical Preservation Office – Scoping Letter Distribution List

Mr. Patrick Lujan, State Historic Preservation Officer
Guam Historic Resources Division
Department of Parks and Recreation 490 Chalan Palasyo
Agana Heights GU 96910

State Historical Preservation Office – Example Scoping Letter



**DEPARTMENT OF THE AIR FORCE
HEADQUARTERS 36TH WING (PACAF)
ANDERSEN AIR FORCE BASE GUAM**

20 March 2026

JESSE E. LANTZ, Lt Col, USAF
Commander, 36th Civil Engineer Squadron
Unit 14007
Andersen AFB Guam 96543-4003

Mr. Patrick Lujan, State Historic Preservation Officer
Guam Historic Resources Division
Department of Parks and Recreation
490 Chalan Palasyo
Agana Heights, GU 96910

Dear Mr. Lujan

In accordance with the National Environmental Policy Act (NEPA) of 1969 and Department of the Air Force (DAF) NEPA regulations, the DAF is preparing an Environmental Assessment (EA) to evaluate potential environmental impacts associated with the expansion of the 554 Red Horse Squadron (RHS) quarry at Andersen Air Force Base, Guam, to support current and future construction projects and training and operational requirements. This project would support the 554 RHS by providing a reliable, sustainable, and adequate source of construction aggregate materials and ensure that the 554 RHS can continue to produce the aggregate needed for airfield pavement projects, facility and infrastructure improvements, military construction support, and unit-specific training activities that require material production and heavy-equipment operation. If the quarry is not expanded, 554 RHS would lack the materials needed to meet current and projected mission demands and would not be able to continuously support DAF construction and repair requirements across the installation. Therefore, the 554 RHS would be unable to maintain required readiness levels, support essential hands-on training, or execute planned DAF construction, repair, or contingency response activities in a timely, mission-effective, and cost-efficient manner.

The DAF has determined that the Area of Potential Effects (APE) for this Undertaking consists of the existing 554th RHS quarry. Pursuant to Section 106 of the National Historical Preservation Act (NHPA) of 1966 (36 CFR Part 800), as amended, the DAF would like to initiate consultation to allow you and your designee the opportunity to identify any comments, concerns, and suggestions relevant to the NEPA compliance process concerning the Proposed Action. A copy of the *Final Description of the Proposed Action and Alternatives for the Environmental Assessment Addressing Expansion of the 554th Red Horse Squadron Quarry at Andersen Air Force Base, Guam* is available at <https://www.andersen.af.mil/Environment/>.

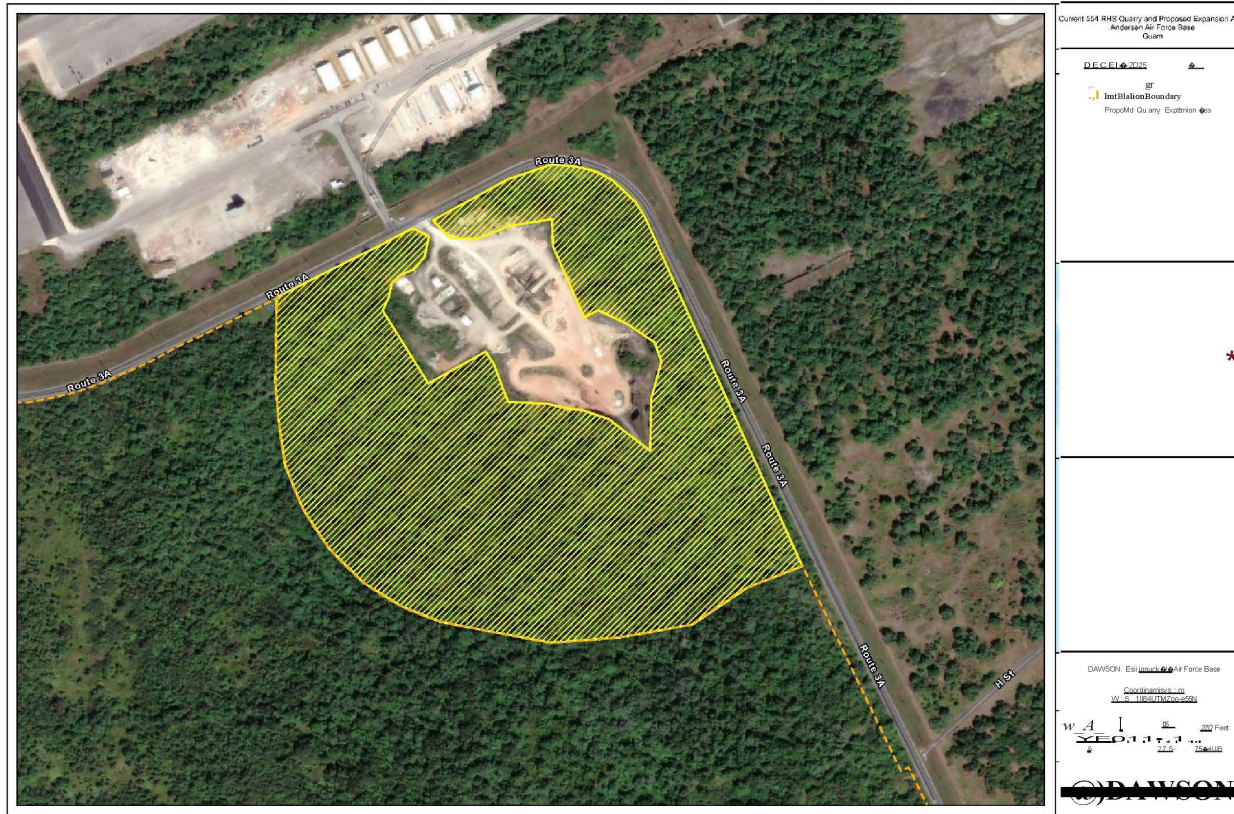
As noted above, the DAF would like to initiate consultation pursuant to Section 106 of the NHPA concerning this Undertaking and is seeking concurrence on the APE, as defined. Please send your written responses Mr. Gerard Chargualaf, 36th Civil Engineer Squadron, ATTN: CEIE Unit 14007, APO, AP 96543-4007, or by email to raymond.chargualaf.1@us.af.mil. Please contact Mr. Ben Guzman, Cultural Resources Program Manager, at jose.guzman.13@us.af.mil if you have any technical questions. Thank you in advance for your assistance in this effort.

Sincerely

LANTZ.JESSE.E.10
26650450
JESSE E. LANTZ, Lt Col, USAF
Commander, 36th Civil Engineer Squadron

A digital signature in red ink, consisting of a stylized scribble, is positioned over the text of the signature block. To the right of the signature, there is a small text box containing the following information: "Digitally signed by LANTZ.JESSE.E.1026650450 Date: 2026.02.18 17:06:28 +10'00'".

Attachment:
Map of Proposed Project Location



Map of Proposed Project Location

US Fish and Wildlife Service - Scoping Letter Distribution List

Dr. Earl Campbell
U.S. Fish and Wildlife Service
Pacific Island Fish and Wildlife Office
300 Ala Moana Boulevard, Room 3-122
Honolulu HI 96850

US Fish and Wildlife Service – Example Scoping Letter



DEPARTMENT OF THE AIR FORCE
HEADQUARTERS 36TH WING (PACAF)
ANDERSEN AIR FORCE BASE GUAM

26 February 2026

JESSE E. LANTZ, Lt Col, USAF
Commander, 36th Civil Engineer Squadron
Unit 14007
Andersen AFB Guam 96543-4003

Dr. Earl Campbell
U.S. Fish and Wildlife Service
Pacific Island Fish and Wildlife Office
300 Ala Moana Boulevard, Room 3-122
Honolulu, HI 96850

Dear Dr. Campbell

Hafa Adai from the 36th CES! In accordance with the National Environmental Policy Act (NEPA) of 1969 and Department of the Air Force (DAF) NEPA regulations, the DAF is preparing an Environmental Assessment (EA) to evaluate potential environmental impacts associated with the expansion of the 554 Red Horse Squadron (RHS) quarry at Andersen Air Force Base, Guam, to support current and future construction projects and training and operational requirements. This project would support the 554 RHS by providing a reliable, sustainable, and adequate source of construction aggregate materials and ensure that the 554 RHS can continue to produce the aggregate needed for airfield pavement projects, facility and infrastructure improvements, military construction support, and unit-specific training activities that require material production and heavy-equipment operation. If the quarry is not expanded, 554 RHS would lack the materials needed to meet current and projected mission demands, and would not be able to continuously support DAF construction and repair requirements across the installation. Therefore, the 554 RHS would be unable to maintain required readiness levels, support essential hands-on training, or execute planned DAF construction, repair, or contingency response activities in a timely, mission-effective, and cost-efficient manner.

Pursuant to Section 7(a)(2) of the Endangered Species Act of 1973, as amended (16 United States Code 1531, et seq.), Andersen AFB conducted a biological effects analysis to determine if or how the project may affect federally-protected species. All interrelated and interdependent actions were analyzed during that review. The United States Fish and Wildlife Service (USFWS) Information for Planning and Consultation (IPaC) Official Species and Habitat List was received on 3 December 2025 under Consultation Code 2026-0022208. The USFWS IPaC tool listed 22 federally listed threatened, endangered, or candidate species with the potential to occur within the project area (see table below).

Common Name	Scientific Name	Status	Critical Habitat
Mammals			
Mariana Fruit Bat	<i>Pteropus mariannus mariannus</i>	Threatened	No overlap
Birds			
Guam Kingfisher	<i>Todiramphus cinnamominus</i>	Endangered	No overlap
Guam Rail	<i>Gallirallus owstoni</i>	Endangered	None designated
Reptiles			
Slevin's Skink	<i>Emoia slevini</i>	Endangered	None designated
Snails			
Fragile Tree Snail	<i>Samoana fragilis</i>	Endangered	None designated
Guam Tree Snail	<i>Partula radiolata</i>	Endangered	None designated
Humped Tree Snail	<i>Partula gibba</i>	Endangered	None designated
Insects			
Mariana Eight-spot Butterfly	<i>Hypolimnas octocula marianensis</i>	Endangered	None designated
Mariana Wandering Butterfly	<i>Vagrans egistina</i>	Endangered	None designated
Flowering Plants			
Aplokating-palaoan	<i>Psychotria malaspinae</i>	Endangered	None designated
Berenghenas Halomtano	<i>Solanum guamense</i>	Endangered	None designated
Cebello Halomtano	<i>Bulbophyllum guamense</i>	Threatened	None designated
-	<i>Dendrobium guamense</i>	Threatened	None designated
-	<i>Eugenia bryanii</i>	Endangered	None designated
Hayun Iagu (=guam), Tronkon Guafi (rota))	<i>Serianthes nelsonii</i>	Endangered	None designated
-	<i>Maesa walkeri</i>	Threatened	None designated
-	<i>Nervilia jacksoniae</i>	Threatened	None designated
-	<i>Tabernaemontana rotensis</i>	Threatened	None designated
-	<i>Tinospora homosepala</i>	Endangered	None designated
-	<i>Tuberolabium guamense</i>	Threatened	None designated
Ufa-halomtano	<i>Heritiera longipetiolata</i>	Endangered	None designated
Conifers & Cycads			
Fadang	<i>Cycas micronesica</i>	Threatened	None designated

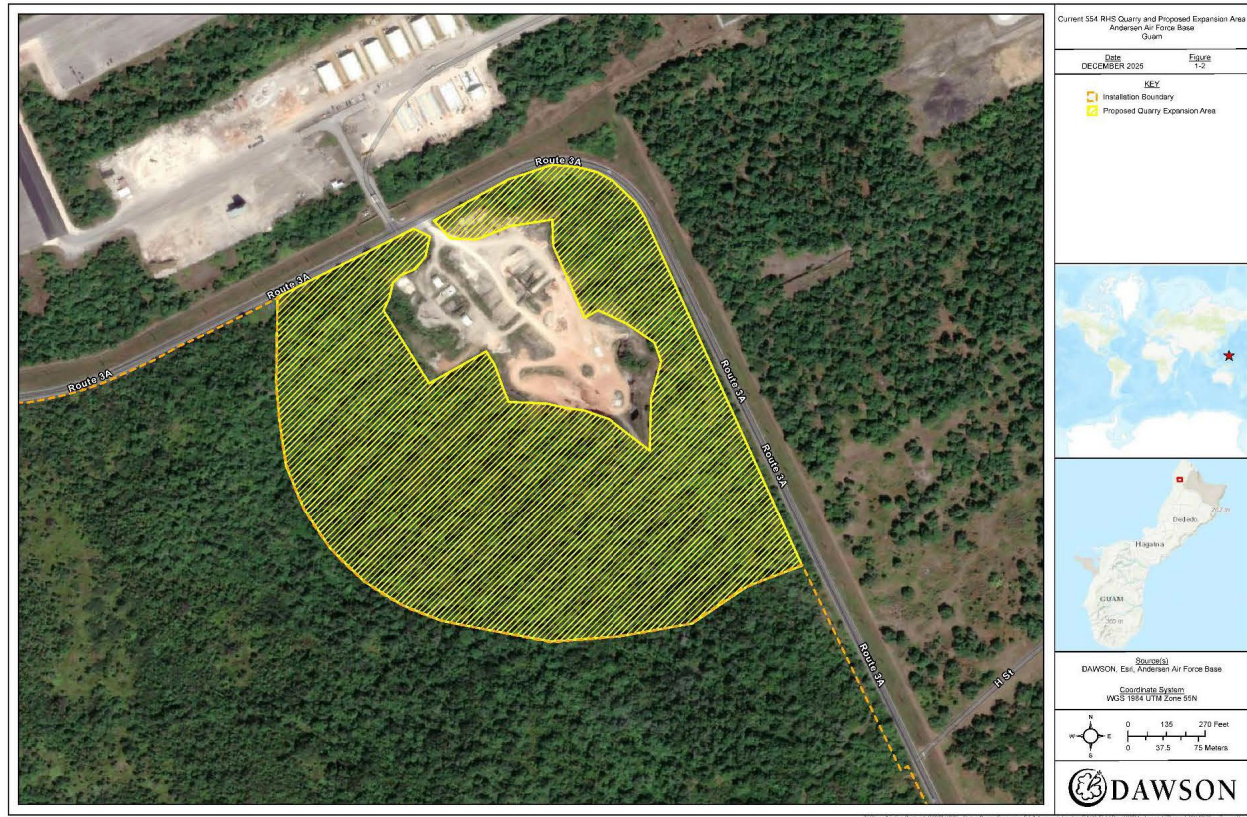
In accordance with Executive Order 12372, *Intergovernmental Review of Federal Programs*, we solicit your comments concerning the proposal and any potential environmental consequences of the action. If you have additional information regarding impacts of the Proposed Action on the natural environment or other environmental aspects of which we are unaware, we would appreciate receiving such information for inclusion and consideration during the NEPA compliance process. A copy of the *Final Description of the Proposed Action and Alternatives for the Environmental Assessment Addressing Expansion of the 554th Red Horse Squadron Quarry at Andersen Air Force Base, Guam* is available at <https://www.andersen.af.mil/Environment/>. A hardcopy can also be provided upon request. We look forward to and welcome your participation in this process. Please respond within 30 days of the date of this letter to ensure your concerns are adequately addressed in the EA.

Please send your written responses to Mr. Gerard Chargualaf, 36th Civil Engineer Squadron, ATTN: CEIE (EA Title) Unit 14007, APO, AP 96543-4007, or by email to raymond.chargualaf.1@us.af.mil. Thank you in advance for your time and assistance!

Sincerely,
LANTZ.JESSE.E.10
26650450
JESSE E. LANTZ, Lt Col, USAF
Commander, 36th Civil Engineer Squadron

Digitally signed by
LANTZ.JESSE.E.1026650450
Date: 2026.02.26 20:34:16 +10'00'

Attachment:
Map of Proposed Project Location



Map of Proposed Project Location

Guam Cultural / CHamoru Organizations – Scoping Letter Distribution List

Mr. Melvin Won Pat-Borja
Director
Department of CHamoru Affairs
Dagupan Center, 2nd Floor
Hagåtña Guam 96910

Mr. Jasper F.C. Naputi
President
Guam Humanities Council
#3 Juan M. Santos Lane
Hagåtña Guam 96910

Ms. Monica Guzman
Executive Director
Guam Preservation Trust
167 Padre Palomo Street
Hagåtña, Guam 96910

Ms. Kimberlyn Taitano
Executive Director
Guam Museum Foundation, Inc.
193 Chalan Santo Papa
Hagåtña Guam 96910

Chairperson
CHamoru Land Trust Commission
615 South Marine Corps Drive
Tiyan, Barrigada Guam 96913

Chairperson
Guam Council on the Arts and
Humanities Agency (CAHA)
201 W. Chalan Santo Papa
Hagåtña Guam 96910

President
Kumisión i Fino' CHamoru (CHamoru
Language Commission)
Guam Department of CHamoru Affairs
P.O. Box 2950
Hagåtña Guam 96932

Guam Cultural / CHamoru Organizations – Example Scoping Letter



DEPARTMENT OF THE AIR FORCE
HEADQUARTERS 36TH WING (PACAF)
ANDERSEN AIR FORCE BASE GUAM

20 March 2026

JESSE E. LANTZ, Lt Col, USAF
Commander, 36th Civil Engineer Squadron
Unit 14007
Andersen AFB Guam 96543-4003

Mr. Melvin Won Pat-Borja
Director
Department of CHamoru Affairs
Dagupan Center, 2nd Floor
Hagåtña GU 96910

Dear Mr. Won Pat-Borja

In accordance with the National Environmental Policy Act (NEPA) of 1969 and Department of the Air Force (DAF) NEPA regulations, the DAF is preparing an Environmental Assessment (EA) to evaluate potential environmental impacts associated with the expansion of the 554 Red Horse Squadron (RHS) quarry at Andersen Air Force Base, Guam, to support current and future construction projects and training and operational requirements. This project would support the 554 RHS by providing a reliable, sustainable, and adequate source of construction aggregate materials and ensure that the 554 RHS can continue to produce the aggregate needed for airfield pavement projects, facility and infrastructure improvements, military construction support, and unit-specific training activities that require material production and heavy-equipment operation. If the quarry is not expanded, 554 RHS would lack the materials needed to meet current and projected mission demands and would not be able to continuously support DAF construction and repair requirements across the installation. Therefore, the 554 RHS would be unable to maintain required readiness levels, support essential hands-on training, or execute planned DAF construction, repair, or contingency response activities in a timely, mission-effective, and cost-efficient manner.

The DAF has determined that the Area of Potential Effects (APE) for this Undertaking consists of the existing 554th RHS quarry. The DAF is currently conducting research and investigations to identify historic properties within the APE to determine the potential effects, if any, of the Undertaking.

Pursuant to Section 106 of the NHPA (36 CFR Part 800) and Executive Order 13175, *Consultation and Coordination with Indian Tribal Governments*, that DAF would like to initiate government-to-government consultation concerning this Undertaking to allow you and your designee the opportunity to identify any comments, concerns, and suggestions you might have. Andersen AFB has identified three discrete pottery scatters within the proposed quarry expansion area. Additional cultural resource surveys will be conducted to further document existing conditions. We respectfully request your assistance in identifying any historic properties, traditional cultural places, or other resources of concern that may be affected by the Undertaking, including those that may not be currently known to us.

A copy of the *Final Description of the Proposed Action and Alternatives for the Environmental Assessment Addressing Expansion of the 554th Red Horse Squadron Quarry at Andersen Air Force Base, Guam* is available at <https://www.andersen.af.mil/Environment/>. A hardcopy can also be provided upon request. As we move forward through this process, we welcome your participation and input.

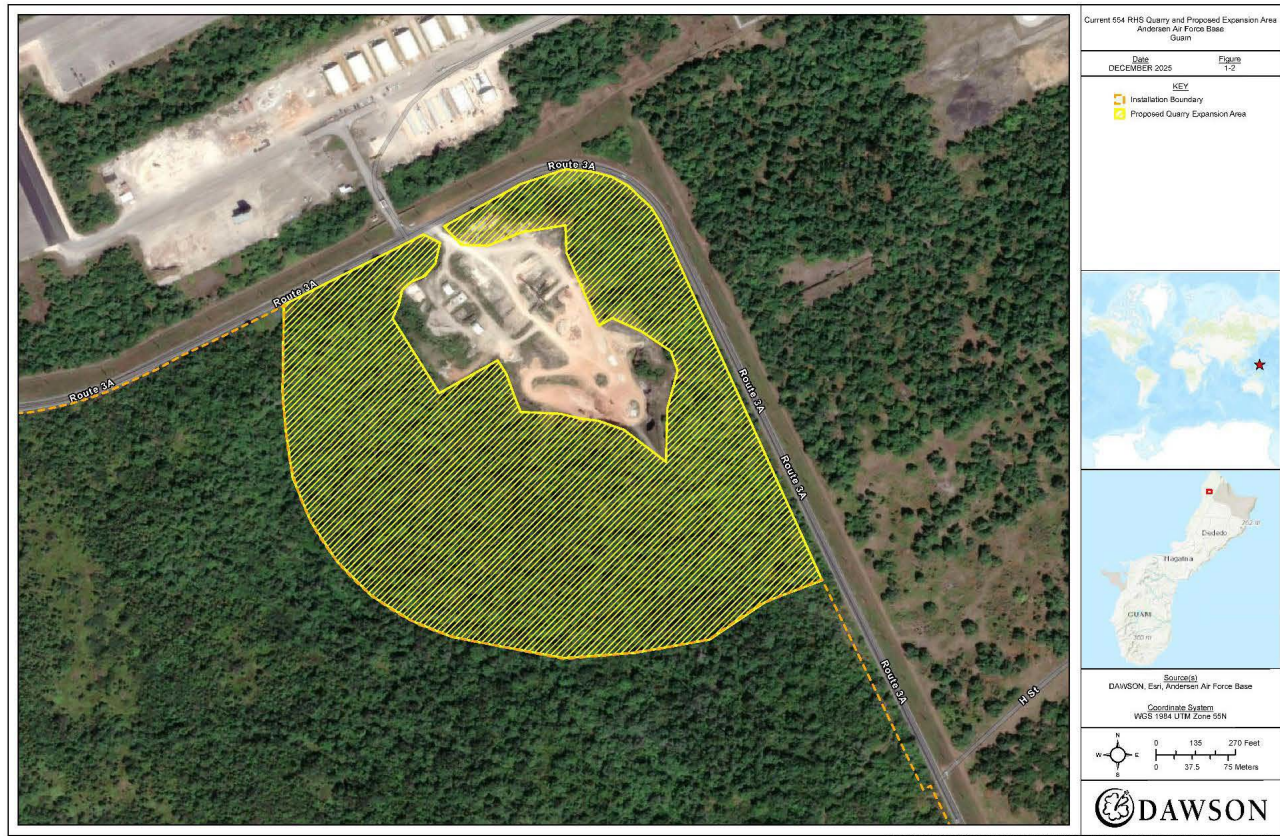
As noted above, the DAF would like to initiate government-to-government consultation pursuant to Section 106 of the NHPA concerning this Undertaking and is seeking concurrence on the APE, as defined. For technical information, please contact Mr. Ben Guzman, 36th Civil Engineer Squadron, ATTN: CEIE (EA Title) Unit 14007, APO, AP 96543-4007, or by email to jose.guzman.13@us.af.mil. Thank you in advance for your assistance in this effort.

Sincerely

LANTZ.JESSE.E.102665
0450
JESSE E. LANTZ, Lt Col, USAF
Commander, 36th Civil Engineer Squadron

Digitally signed by
LANTZ.JESSE.E.1026650450
Date: 2026.02.18 17:02:20 +10'00'

Attachment: Map of Proposed Project Location



Map of Proposed Project Locations

THIS PAGE INTENTIONALLY LEFT BLANK.