

**“DO NOT DISCUSS CLASSIFIED INFORMATION ON UNSECURE TELEPHONES  
OFFICIAL DoD TELEPHONES ARE SUBJECT TO MONITORING FOR  
COMMUNICATIONS SECURITY PURPOSES AT ALL TIMES.”**

**“DoD TELEPHONES ARE PROVIDED FOR THE TRANSMISSION OF OFFICIAL  
GOVERNMENT INFORMATION ONLY AND ARE SUBJECT TO COMMUNICATIONS  
SECURITY MONITORING AT ALL TIMES. USE OF OFFICIAL DoD TELEPHONES  
CONSTITUTES CONSENT TO COMMUNICATIONS SECURITY TELEPHONE  
MONITORING IAW DoD DIRECTIVE 4640.6.”**

**36TH WING  
ANDERSEN AIR FORCE BASE, GUAM  
BASE TELEPHONE DIRECTORY  
APRIL 2015**

**EMERGENCY NUMBERS**

<b>FIRE</b>	<b>POLICE</b>	<b>AMBULANCE</b>
<b>911</b>	<b>911</b>	<b>911</b>

**DIALING INSTRUCTIONS**

**DSN PREFIX - 366  
DIALING OFF BASE - 99+XXX-XXXX  
OPERATOR ASSISTANCE:  
FROM ON-BASE - 113  
FROM OFF-BASE - 366-7627**

# Team Andersen Telephone Directory Table of Contents

Emergency Numbers	3
General Information	4
Using Your Telephone	4
Trouble Reporting	4
Useful Numbers	4
Description of DSN	4
Telephone Precedence System	5
Dialing Instructions	6
On-Base Calls	6
Off-Base Calls	6
DSN Calls	6
DSN Conference Calls	6
Conference Calls Not Using DSN	6
Information Calls	7
Commercial Long Distance Calls	7
FTS Dialing Access From On-Base	7
FTS Dialing Access From Residence	7
Collect and Credit Card Calls	7
Official Toll Free Calls	7
Outgoing Morale Calls	7
Basic Telephone Features	8
Call Transfer	8
Three-Way Calling	8
Consultation Hold	8
Ring Again	9
Call Forward	9
Last Number Redial	9
Additional Features	9
Care of Telephone Equipment	9
Requesting Telephone Service	9
Protection of Buried Cables	10
Reporting Operator Service Complaints	10
COMSEC	10
Reporting Malicious Calls (Bomb Threats and Nuisance Calls)	10
Minimize for Telephone Users	11
Central Base Paging System	11
Directory Listings	11
CONUS Base Listings	12
DSN Quick Reference for Pacific Region	14
Time Zone Conversion Chart	14
DSN Quick Reference for Overseas Bases	15
Alphabetical Listing	16
Organizational Listing	19
Miscellaneous Listing	34
Quick Reference Guide	35

Team Andersen  
Telephone Directory

## Emergency Numbers

**\*\*\* AMBULANCE – 911 \*\*\***

**\*\*\* FIRE – 911 \*\*\***

**\*\*\* POLICE – 911 \*\*\***

**FROM A COMMERCIAL # 653; DIAL 911; INFORM THE 911  
OPERATOR THAT YOU LIVE ON ANDERSEN AFB.**

<u>OFFICE</u>	<u>NUMBER</u>
AFOSI Detachment 602	366-2987
AFOSI (Non-Duty Hours)	366-2910
Aircraft Accident	911
Civil Engineering Readiness	366-3113
Non-Duty Hours	366-2981
Air-Sea Rescue	355-4905
Ambulance, AAFB/Navy	911
American Red Cross	472-6217/9
Non-Duty Hours	688-0282
Bomb Disposal	366-5198
Non-Duty Hours	366-2981
Chaplain	366-6139
Non-Duty Hours	366-2910
Command Post	366-2981
Crime Stop	366-6666
Decompression Chamber/Dive Accident	339-7143
Non-Duty Hour	777-9295
Emergency Room, Navy Hospital	344-9232
Fire Department, AAFB/Navy	911
Law Enforcement	911
Poison Control Center, Navy	344-9232
U.S. Coast Guard	355-4910

# Team Andersen Telephone Directory General Information Section

## USING YOUR TELEPHONE

### TROUBLE REPORTING

To report base telephone malfunctions, dial 119 and provide the following information:

name/rank  
building number  
circuit/phone in trouble (if one extension, give set number)  
brief description of malfunction  
callback number

You will be given a job control number for reference. For special circuits/alarm circuits, it is the responsibility of the user to know the circuit number.

## USEFUL NUMBERS

TELEPHONE SERVICE CALLS	
TELEPHONE REPAIR . . . . .	119
INFORMATION . . . . .	113
CHIEF OPERATOR AAFB . . . . .	366-4158
TELEPHONE BILLING CLERK . . . . .	366-2222

## DEFENSE SWITCHED NETWORK (DSN)

1. DSN is the primary information transfer network for the Defense Information Systems Network (DISN). The DSN provides the worldwide non-secure voice, secure voice, data, facsimile and video teleconferencing services for DoD command and control (C2) elements, their supporting activities engaged in logistics, personnel, engineering and intelligence, as well as other Federal agencies.

**ALL CALLS PLACED THROUGH DSN ARE SUBJECT TO MONITORING. USERS OF DSN ARE SUBJECT TO MONITORING. USERS OF DSN ARE LIMITED TO OFFICIAL GOVERNMENT BUSINESS.**

2. Use of DSN:

- (a) Will be authorized for official communications.
- (b) Will be restricted to:
  - (1) Only those calls that are essential, requiring a timeliness that cannot be obtained by other means, and would stand the scrutiny afforded a commercial toll call.
  - (2) The maximum time required to accomplish an official business call and will normally not exceed 5 minutes.
  - (3) The use of a precedence level in conjunction with the subject matter of the call as established in the Joint Uniform Telephone Communications Precedence System.
  - (4) The use of graphic, facsimile or unsecured voice-data devices only when approved by the heads of DoD agencies or activities. Voice-data, facsimile and graphic service in DSN will normally not exceed a continuous transmission time of one hour during normal business hours.
- (c) Will not be authorized for:
  - (1) Use, directly or indirectly, by any non-appropriated fund activities (clubs, exchanges, and other unofficial activities), except when approved by the Joint Chiefs of Staff. Class "A" & "C" are authorized (limited) at some NAF activities.
  - (2) Calls within an installation, metropolitan area, or those confined geographical areas where other existing government-provided local telephone service is adequate.
  - (3) Unofficial or personal calls.

## TELEPHONE PRECEDENCE SYSTEM

The National Communications System (NCS) Voice Precedence System was established by NCS Memorandum 1-70 dated 14 February 1970, is used by all authorized users of DoD voice communications facilities. Since the effectiveness of the system depends on the cooperation of the people authorized to use it, users must: (1) be familiar with the purposes of each precedence category and the type of call that is assigned the precedence and (2) exercise care not to request or use a precedence higher than required.

The NCS Voice Precedence System does not make provisions for conducting test and exercise calls. Those activities or individuals authorized or required to conduct such test or exercise calls will use a precedence consistent with the nature of the test or exercise. When the originator of the test or exercise call has contacted the called party, the call will immediately be identified as a flash, immediate, or priority precedence test or exercise.

The following examples should aid users in determining what precedence to use when placing a call. These examples are according to the NCS Voice Precedence System, but are not to be used exclusively for determination of the precedence of a call. This should be at the discretion of the originator of the call.

1. **FLASH OVERRIDE:** Do not have this capability at this time.
2. **FLASH:** FLASH calls preempt immediate, priority, and routine calls. Listed below are examples of flash calls:
  - (a) Calls pertaining to C2 of military forces essential to defense and retaliation.
  - (b) Critical intelligence essential to national survival.
  - (c) Conduct of diplomatic negotiations critical to ceasing or limiting hostilities.
  - (d) Dissemination of critical civil alert information essential to national survival.
  - (e) Continuity of Federal Government functions essential to national survival.
  - (f) Fulfillment of critical United States internal security functions essential to national survival.
  - (g) Catastrophic events of national or international significance.
3. **IMMEDIATE:** IMMEDIATE calls preempt priority and routine calls and are reserved for communications pertaining to situations that gravely affect the security of national and Allied Forces. Listed below are some examples of immediate calls:
  - (a) Reconstitution of forces in a post attack period.
  - (b) Intelligence essential to national security.
  - (c) Conduct of diplomatic negotiations to reduce or limit the threat of war.
  - (d) Implementation of Federal Government actions essential to national survival.
  - (e) Situations that gravely affect the security of the United States.
  - (f) Civil defense actions concerning the direction of the population and their survival.
  - (g) Disaster or events serious enough to have an immediate and detrimental effect on the welfare of the population.
  - (h) Vital information having an immediate effect on aircraft, spacecraft, or missile operations.
  - (i) Distress assistance.
4. **PRIORITY:** PRIORITY calls preempt routine calls and are reserved for communications requiring expeditious action by called parties furnishing essential information for conducting government operations.
5. **ROUTINE:** This precedence applies to official government communications that require rapid transmission by telephonic means but do not require preferential handling. A routine call does not pre-empt any other call.

## DIALING INSTRUCTIONS

### **ON-BASE CALLS:**

From 366 or 362 prefix phones, dial the 7-digit number.

Example: 366-XXXX.

### **OFF-BASE CALLS:**

Dial 99 followed immediately by the 7-digit number.

Example: 99 + 653-1234

**DSN CALLS:**

DSN Calls are subject to preemption by higher precedence calls. Personal calls over DSN are prohibited (except as authorized by AFI 33-111). Permission to use the system for calls to overseas locations will be restricted to authorized personnel who have a mission requirement for calling. Not all base phones are equipped with Pacific and/or CONUS dial-access. If your phone is not appropriately equipped, use operator assistance by dialing "0" from an on-base phone, and 366-7627 from an off-base phone to place an official DSN call.

DSN entry code to Alaska	317
DSN entry code to Australia	715
DSN entry code to Canada	319
DSN entry code to CONUS	312
DSN entry code to Europe	314
DSN entry code to Pacific	315
DSN entry code to SW Asia	318
DSN Worldwide directory assistance	312-560-1110

**ROUTINE precedence calls:**

Anywhere in the Pacific theater, dial the 7-digit DSN number direct.

Anywhere in the CONUS, dial 312 + 7-digit DSN number.

**PRIORITY precedence calls:**

Anywhere in the Pacific theater, dial 93 + 7-digit DSN number.

Anywhere in the CONUS, dial 93 + 312 + 7-digit DSN number.

**IMMEDIATE precedence calls:**

Anywhere in the Pacific theater, dial 92 + 7-digit number.

Anywhere in the CONUS, dial 92 + 312 + 7-digit DSN number.

**DSN CONFERENCE CALLS:**

Dial the base operator for DSN conference call. Tell the operator that you wish to make a conference call and provide the operator with a list of numbers to be included in the conference.

**CONFERENCE CALLS not using DSN:**

To place a conference call when various types of circuits are to be used (tie lines, on-base extension, DSN) dial 0 and give the operator the details of your call.

**INFORMATION CALLS:**

Dial 113 from on base or dial 366-7627 from off-base.

**COMMERCIAL LONG DISTANCE CALLS:**

An attempt will first be made to use DSN lines before placing a commercial long-distance call. The direct long distance dialing system from class base telephones will be used for OFFICIAL CALLS ONLY.

Personnel desiring to place commercial long distance telephone calls must contact their Unit Telephone Control Officer (TCO) for approval. Contact your Unit Orderly Room to find out who your TCO is.

**FTS DIALING ACCESS FROM ON-BASE:**

1. Dial 98 + 1 + area code + phone number for CONUS, Hawaii, Puerto Rico and Canada calls.  
Dial 98 + 011 + country code + city code + phone number for International calls.
2. Wait for recording.
3. Enter authorization code/pin number.

4. Call should process.

**FTS DIALING ACCESS FROM RESIDENCE:**

1. Dial 355-5473.
2. Wait for a confirmation tone followed by a second dial tone.
3. Enter authorization code/pin number.
4. Wait for another dial tone, then dial:  
For CONUS, Hawaii, Puerto Rico and Canada calls: 98 + 1 + area code + number.  
For International calls: 98 + 011 + country code + city code + number.
5. Call should process.

**COLLECT AND CREDIT CARD CALLS:**

These types of calls have to be processed through a commercial long distance telephone company operator. The following companies are available and may be reached by dialing:

AT&T USA DIRECT	1+800+225-5288
MCI USA DIRECT	1+800+888-8000
IT&E (PRE-PAID CALLING CARD)	99-646-3456

**OFFICIAL TOLL FREE CALLS**

From a base phone, personnel may access 1-800, 1-866, 1-877 and 1-888 toll free numbers:

99 + 1-800 + number, 99 + 1-866, 99 + 1-877 + number and 99 + 1-888 + number,

OR

From a DSN phone, personnel may access 809-463-3376 for a toll free number bypassing the base operator. Dial appropriate toll free number after the tone.

**OUTGOING MORALE CALLS**

A morale call may be placed by contacting the Andersen Morale Line at extension 366-1900-option 2, 24-hours a day 7 days a week. Morale calls are placed to another DSN switch, closest to the calling party's call destination, and from there, calls can be extended.

## **BASIC TELEPHONE FEATURES**

The basic telephone system is designed to make it easier for you to carry out your job responsibilities. With the features this system provides, your telephone is capable of many sophisticated operations. All base telephone users have, as a minimum, the below listed additional features.

NOTE: These features and instructions apply only to the BASIC SINGLE LINE instrument commonly found in offices across Andersen AFB. Separate features and instructions may apply to other instruments.

<b><u>FEATURE QUICK REFERENCE GUIDE</u></b>	
<b>CALL TRANSFER OR THREE-WAY CALLING</b>	<b>SH + DIAL 3RD NUMBER + SH</b>
<b>RING AGAIN</b>	<b>SH + *78</b>
<b>CALL FORWARDING</b>	<b>SH + *70 ( # 70 TO RELEASE )</b>
<b>SH = PRESS SWITCHHOOK MOMENTARILY</b>	
<b><u>OPTIONAL FEATURES</u></b>	
<b>CALL PICKUP</b>	<b>111</b>
<b>SPEED CALLING (SHORT)</b>	<b>*80 + CALL NUMBER</b>
<b>SPEED CALLING (LONG)</b>	<b>*81 + CALL NUMBER</b>

### **CALL TRANSFER**

1. Call Transfer allows you to transfer incoming calls to another base telephone
2. To activate:
  - (a) Advise the calling party that you are going to transfer the call.
  - (b) Press the switch-hook momentarily (hear a special dial tone).
  - (c) Dial the new extension number or dial "0" to transfer the call to the operator.
  - (d) As a courtesy, you may remain on the line until the other extension answers. If the other number is busy, press the switchhook again to return to your caller. Announce that the number is busy and ask if you may help them. If the other extension answers, you may announce that a call is being transferred. The original call is on hold and cannot hear this conversation. Press switchhook again to connect the two parties.
  - (e) Replace the handset on the cradle.

### **THREE-WAY CALLING**

1. This feature allows you to establish a three-way conference call without the assistance of the operator. Class of service restrictions placed on a station still apply and cannot be suspended by three-way calling.
2. To activate:
  - (a) Follow the preceding Call Transfer instructions.
  - (b) After the party you're calling answers, press the switchhook once momentarily and then all three parties are connected.

### **CONSULTATION HOLD**

1. This feature enables you, while on an established call, to place the original call on hold and to consult privately with a third party without assistance from an operator. You can then return to the original call. The third party is disconnected from the call after pressing the switchhook twice to return to the originally called party.



2. To activate:
  - (a) Advise the original party that you are putting the party on hold.
  - (b) Place the original call on hold by pressing the switchhook then dial \* 79 (you'll hear a special dial tone).
  - (c) Dial the third party's telephone number.
  - (d) Consult with the third party. The original party is on hold and cannot hear the conversation.
  - (e) To return to the original party, press the switchhook once momentarily, pause, then press switch-hook momentarily again, or just allow the connected party to hang up and you're then connected to the original party.

**RING AGAIN**

1. This feature allows you to automatically call a busy number without having to dial the number repeatedly.
2. To activate:
  - (a) Dial busy party's telephone number (hear busy tone).
  - (b) Press the switchhook once momentarily (hear special dial tone).
  - (c) Dial \* 78. Once you hear a confirmation tone, hang up.
  - (d) When the called party's number is no longer busy, your telephone will automatically ring.
  - (e) When you answer, ringing will be initiated at the distant end.
  - (f) To cancel, dial # 78. Once you hear a confirmation tone, hang up.

**CALL FORWARD**

1. This feature allows incoming calls to be routed to an alternate designated number.
2. To activate:
  - (a) Lift handset from the cradle (hear dial tone).
  - (b) Dial \* 70 (hear special dial tone).
  - (c) Dial the number to which calls are to be forwarded (hear confirmation tone)
  - (d) Replace the handset in the cradle.
  - (e) To cancel, dial # 70 (hear confirmation tone) then hang up.

**LAST NUMBER REDIAL**

1. This feature allows you to automatically redial the last number called.
2. To activate:
  - (a) Lift the handset from the cradle.
  - (b) Press # #. The previously dialed number will automatically be redialed.

**ADDITIONAL FEATURES**

You may request additional features by submitting a 36 AEW Form 10, Telephone/Communications Work Request to Dial Central Office (DCO). Optional features available are:

Call Pick Up	111
Speed Calling (short)	*80
Speed Calling (long)	*81

**CARE OF TELEPHONE EQUIPMENT**

Telephone users are responsible for the proper use, care and safekeeping of telephone instruments and equipment and are liable for any loss or damage thereto. Under no circumstances will the subscriber move, alter or make additions to the equipment. Any telephone equipment that is found to have been tampered with by unauthorized personnel will be disconnected and withdrawn from the using agency.

**REQUESTING NEW TELEPHONE SERVICE:**

If you are relocating or planning future telephone requirements, contact the Andersen Comm Focal Point at 366-2666. Short-notice requirements cause significant delays in completing work requests and should be kept to a minimum. Submit your work

request at least 30 days prior to the requested completion date. If your request is short-notice, include justification, and whether it is downward directed, mission-essential or supporting an exercise. Include a clear, concise, description of the work to be accomplished, along with an accurate diagram of the area. It is critical that you include a reliable point of contact knowledgeable of the work to be accomplished, usually your Telephone Control Officer (TCO).

### **PROTECTION OF BURIED TELEPHONE CABLE**

Prior to excavating, grading, digging, ditching or driving of stakes or poles, the agency undertaking the work will first obtain a permit from the 36th Civil Engineer Squadron, Customer Service Section, 366-2916. This permit will then be coordinated with the 36th Communications Squadron, Cable Maintenance Section, 366-2626, before breaking ground. They will assist in the location of buried cables. If the underground telephone cable cannot be located on the base map, a 36th Communications Squadron telephone cable-crew will mark the cables. The agency responsible for construction activity will ensure that the persons actually performing the work take adequate precautionary measures to prevent cutting or damaging the cables. These instructions are applicable to all units, personnel and contractors working on Andersen AFB.

### **REPORTING TELEPHONE OPERATOR SERVICE COMPLAINTS**

Telephone operators are instructed to be uniformly courteous and must not enter into controversy with calling parties. Similar action on the part of the telephone users will be an incentive for superior service. Telephone operators are not permitted to give their names when requested by calling parties. Operators are instructed to give their operator number only. Individual operators are forbidden to receive service complaints and are instructed to refer all calls relative to complaints to the chief operator at 366-4158. During non-duty hours, customers are requested to refer all service complaints to the senior operator on duty. If the senior operator on duty still cannot resolve a complaint, customers are requested to call the chief operator during normal duty hours (Mon – Fri, 0730-1600).

### **COMMUNICATIONS SECURITY (COMSEC)**

The fact that any number of people can listen to your conversation is a SECURITY weakness of the telephone system. Talking around, paraphrasing, using code words or nicknames and incomplete references on the telephone are attempts to disguise information. Any person monitoring your telephone conversation probably knows enough to "read through" your attempts to disguise information. Base telephone facilities may be considered compromised. Military-owned or leased telephone systems are subject to monitoring.

SECURE TELEPHONE EQUIPMENT (STE): The STE system provides communications security for the public telephone network. The terminals serve as a standard telephone that operates in secure and unsecured modes.

### **REPORTING MALICIOUS CALLS (Bomb-Threat, Nuisance, Harassing, etc)**

Emergency calls: the telephone numbers for emergency calls are listed at the beginning of the telephone directory; however, subscribers may dial "911". Please state that you are on Andersen AFB. Dial "0" for assistance in reaching any emergency telephone number.

1. If you receive a bomb-threat call, **DO NOT** hang up the telephone--use another telephone to notify the Security Forces Squadron (SFS). If another telephone is not available, then you must use the same telephone to notify SFS personnel at **CRIME STOP, 366-6666**. If danger to life or property is involved, alert everyone and evacuate the area. It's unlawful for any person to make a telephone call during which obscene, lewd, or immoral language is used with the intent to offend. Federal law further prohibits interstate telephone calls that are obscene, lewd, lascivious, filthy, indecent, or where the intent (with or without actual conversation) is to annoy, abuse, threaten or harass any person. It is unlawful to knowingly allow anyone to use a telephone under your control for the above purposes.

2. The following actions will generate a record of a caller's telephone number if the call is made from any DSN telephone line. Anyone who receives a malicious call should use another telephone to contact the Security Forces Squadron. Then, perform the following actions, based on the type of telephone instrument you have, to initiate a trace on incoming DSN calls:

- (a) For a Meridian (AASTRA/NORTEL) Multi-Line Telephone, while the caller is on the line:
  - (1) If your telephone has it, press the Malicious Call Hold (MCH) button.
  - (2) Then press the button for the line the original call was received on to return to the caller.
  - (3) Record all pertinent information on the AF Form 440, Bomb Threat Aid.
  - (4) If the call ends, **ALWAYS LEAVE THE TELEPHONE OFF HOOK!**

OR

- (1) If you have a Conference Call (CONF), Three-Way Call (3WC) or Call Transfer (TXFR) button, press it and listen for a dial tone.
  - (2) Press the asterisk key and then "57" (\*57); you will be automatically be returned to the original call.
  - (3) Record all pertinent information on the AF Form 440, Bomb Threat Aid.
  - (4) If the call ends, **ALWAYS LEAVE THE TELEPHONE OFF HOOK.!**
- (b) For a Two-Line Analog Telephone, while the caller is on the phone:
- (1) Press the LINK button and listen for dial tone.
  - (2) Press the asterisk key and then "57" (\*57); you will be automatically be returned to the original call.
  - (3) Record all pertinent information on the AF Form 440, Bomb Threat Aid.
  - (4) If the call ends, **ALWAYS LEAVE THE TELEPHONE OFF HOOK.!**
- (c) For a Single-Line Analog Telephone, while the caller is on the phone:
- (1) Press the switchhook , flash or link button and listen for dial tone.
  - (2) Press the asterisk key and then "57" (\*57); you will be automatically be returned to the original call.
- (d) Record all pertinent information on the AF Form 440, Bomb Threat Aid.
- (e) If the call ends, **ALWAYS LEAVE THE TELEPHONE OFF HOOK.!**

#### **MINIMIZE FOR TELEPHONE SERVICE USERS**

1. A state-of-emergency may arise, in either peacetime or wartime, necessitating the prompt electrical transmission of message or telephone traffic connected with that emergency. The MINIMIZE program was developed to meet this requirement. As a preparedness measure and to evaluate the operational and administrative procedures prescribed for MINIMIZE, HQ USAF periodically conducts or authorizes exercises that simulate emergency conditions.
2. MINIMIZE is imposed by a commander to reduce and control electrical/telephone communications in this area of authority.
3. The imposition of MINIMIZE warns network users to eliminate nonessential traffic so communications directly concerned with the emergency or exercise will not be delayed.

#### **CENTRAL BASE PAGING SYSTEM USE**

1. Pagers are equipped with a tone alert capability.

Dial 362-XXXX

2. Contact the Personal Wireless Comm Systems monitor at 362-4950 for further information and/or maintenance actions.

#### **DIRECTORY LISTINGS**

The Andersen AFB Telephone Directory format is prescribed in AFI 33-111. Changes to the telephone directory which occur at any time other than prior to the publication of a new directory will be submitted by formal correspondence to: **ATTN: TELEPHONE SUPERVISOR, JRM 511**. Your organization's appointed Telephone Control Officer can also fax change requests to **366-4154**. Ensure the requests are marked **ATTN: TELEPHONE SUPERVISOR**.

## CONUS BASE LISTING

AF ACADEMY 333-XXXX OPERATOR ASSISTANCE 333-1110 COLORADO SPRINGS CO 719-333-1110	228-XXXX OPERATOR ASSISTANCE 228-1110 TUCSON AZ 520-228-3900	325-654-1110  GRAND FORKS AFB 362-XXXX OPERATOR ASSISTANCE 362-3000 EMERADO ND 701-747-3000	(Closed, Weekends & Hol) 732-XXXX OPERATOR ASSISTANCE 732-1110 DEL RIO TX 830-298-3511
ALTUS AFB (0600-2400, Mon-Fri) (0800-2400, Weekends & Hol) 866-XXXX OPERATOR ASSISTANCE 866-1110 ALTUS OK 580-482-1110	DOBBINS ARB (0700-1700) 625-XXXX OPERATOR ASSISTANCE 625-1110 MARIETTA GA 770-919-5000	HANSCOM AFB 478-XXXX OPERATOR ASSISTANCE 478-5980 BEDFORD MA 781-377-4441	LITTLE ROCK AFB (0600-2400, Mon-Fri) (0800-1600, Sa-Su) (Closed, Hol) 731-XXXX OPERATOR ASSISTANCE 731-1110 LITTLE ROCK AR 501-987-1110
ANDREWS AFB 858-XXXX OPERATOR ASSISTANCE 858-1110 WASHINGTON DC 301-981-1110	DOVER AFB 445-XXXX OPERATOR ASSISTANCE 445-3000 DELAWARE DE 302-677-3000	HICKAM AFB 448-XXXX OR 449-XXXX OPERATOR ASSISTANCE 449-1110 HONOLULU HA 808-449-1110	LOS ANGELES AFB 633-XXXX OPERATOR ASSISTANCE 833-1110 LOS ANGELES CA 310-653-1110
ARNOLD AFB (0730-1600) OPERATOR ASSISTANCE 340-5011 ARNOLD TN 931-454-3000	DYESS AFB 461-XXXX OPERATOR ASSISTANCE 461-1110 ABILENE TX 325-696-1110/3113	HILL AFB 777-XXXX OPERATOR ASSISTANCE 777-1110 LAYTON UT 801-777-7221	LUKE AFB 896-XXXX OPERATOR ASSISTANCE 896-1110 GLENDALE AZ 623-856-1110
BARKSDALE AFB 781-XXXX OPERATOR ASSISTANCE 781-1110 SHREVEPORT LA 318-456-1110	EDWARDS AFB (0730-1630, Mon-Fri) (Closed, Weekends & Hol) 527-XXXX OPERATOR ASSISTANCE 527-0111 EDWARDS CA 661-277-1110/661-275-1110	HOLLOWAN AFB 572-XXXX OPERATOR ASSISTANCE 572-1110 ALAMAGORDO NM 875-572-1110	MACDILL AFB 968-XXXX OPERATOR ASSISTANCE 968-1110 TAMPA FL 813-828-1110
BEALE AFB 368-XXXX OPERATOR ASSISTANCE 368-1110 MARYSVILLE CA 530-634-3000	EGLIN AFB 872-XXXX OPERATOR ASSISTANCE 872-1110 VALPARAISO FL 850-882-1110	HOMESTEAD ARB (0730-1600, Mon-Fri) (Closed, Weekends & Hol) 791-XXXX OPERATOR ASSISTANCE 791-7000 HOMESTEAD FL 850-882-1110/305-224-7000	MALMSTROM AFB 632-XXXX OPERATOR ASSISTANCE 632-1110 GREAT FALLS MT 406-731-1110
BOLLING AFB 297-XXXX CMD POST (OFFICIAL) 297-4011 <span style="border: 1px solid black; padding: 2px;">OPERATOR ASSISTANCE</span> 227-0101 WASHINGTON D C 703-695-0441	EIELSON AFB 317-377-XXXX OPERATOR ASSISTANCE 317-377-1110 EIELSON AK 907-377-1110	HURLBURT FIELD 579-XXXX OPERATOR ASSISTANCE 579-1110 MARY ESTHER FL 850-884-1110	MARCH ARB (0700-1600) 447-XXXX OPERATOR ASSISTANCE 447-1110 RIVERSIDE CA 951-655-1110
BROOKS AFB (0700-2200, Mon-Fri) 240-XXXX OPERATOR ASSISTANCE 240-1110 SAN ANTONIO TX 210-536-1110	ELLSWORTH AFB 675-XXXX OPERATOR ASSISTANCE 675-1110 BOXELDER SD 605-385-1000	KEESLER AFB 597-XXXX OPERATOR ASSISTANCE 597-1110 BILOXI MS 228-377-1110	MAXWELL AFB 493-XXXX OPERATOR ASSISTANCE 493-1110 MONTGOMERY AL 334-953-1110 MAXWELL AFB - GUNTER ANNEX 596-XXXX OPERATOR ASSISTANCE 596-1110 MONTGOMERY AL 334-416-1110
CANNON AFB 681-XXXX OPERATOR ASSISTANCE 681-1110 CLOVIS NM 505-784-1110	ELMENDORF AFB 317-552-XXXX OPERATOR ASSISTANCE 317-552-1110 ANCHORAGE AK 907-552-1110	KIRTLAND AFB 246-XXXX OPERATOR ASSISTANCE 246-0011 ALBUQUERQUE NM 505-846-0011	MCCHORD AFB 382-XXXX OPERATOR ASSISTANCE 382-1110 TACOMA WA 253-982-1110
CHARLESTON AFB 673-XXXX OPERATOR ASSISTANCE 673-2100/1110 CHARLESTON SC 843-963-1110	FAIRCHILD AFB 657-XXXX OPERATOR ASSISTANCE 657-1110 SPOKANE WA 509-247-1110 F. E. WARREN AFB 481-XXXX OPERATOR ASSISTANCE 481-1110 CHEYENNE WY 307-773-1110	LACKLAND AFB 473-XXXX OPERATOR ASSISTANCE 473-1110 SAN ANTONIO TX 210-671-1110	MCCONNELL AFB 743-XXXX OPERATOR ASSISTANCE 743-1110 WICHITA KS 316-759-3000
COLUMBUS AFB 742-7XXX OPERATOR ASSISTANCE 742-1110 COLUMBUS MS 662-434-7322	GOODFELLOW AFB 477-XXXX OPERATOR ASSISTANCE 477-1110 SAN ANGELO TX	LANGLEY AFB 574-XXXX OPERATOR ASSISTANCE 574-1110 HAMPTON VA 757-764-9990	MCGUIRE AFB 650-XXXX
DAVIS MONTHAN AFB		LAUGHLIN AFB (0700-1900, Mon-Fri)	

OPERATOR ASSISTANCE  
650-0111  
WRIGHTSTOWN NJ  
609-754-1100

MINNEAPOLIS-ST PAUL  
ARS  
783-XXXX  
OPERATOR ASSISTANCE  
783-2501  
INT'L AIRPORT MN  
612-713-1000

MINOT AFB  
453-XXXX  
OPERATOR ASSISTANCE  
453-1110  
MINOT ND  
701-723-1110

MOODY AFB  
460-XXXX  
OPERATOR ASSISTANCE  
460-1110  
VALDOSTA GA  
229-257-4211

MOUNTAIN HOME AFB  
728-XXXX  
OPERATOR ASSISTANCE  
728-1110  
MOUNTAIN HOME ID  
208-828-2111

NELLIS AFB  
682-XXXX  
OPERATOR ASSISTANCE  
682-1110  
LAS VEGAS NV  
702-652-1110

NIAGARA FALLS ARS  
238-XXXX  
OPERATOR ASSISTANCE  
238-2000  
NIAGARA FALLS NY  
716-236-2000

OFFUTT AFB  
271-XXXX  
OPERATOR ASSISTANCE  
271-1110  
OMAHA NE  
402-294-1110

ONIZUKA AFS  
561-XXXX  
OPERATOR ASSISTANCE  
561-3000  
SUNNYVALE CA  
408-752-3000

PATRICK AFB  
854-XXXX  
OPERATOR ASSISTANCE  
854-1110  
COCO BEACH FL  
321-494-1110

PENTAGON  
227-1201  
OPERATOR ASSISTANCE  
235-3000  
WASHINGTON DC  
703-697-1201

PETERSON AFB  
834-XXXX  
OPERATOR ASSISTANCE  
834-7011  
COLORADO SPRINGS CO  
719-556-7321

POPE AFB  
424-XXXX

OPERATOR ASSISTANCE  
424-1110  
FAYETTEVILLE NC  
910-394-1110

RANDOLPH AFB  
487-XXXX  
OPERATOR ASSISTANCE  
487-1110  
SAN ANTONIO TX  
210-652-1110

ROBINS AFB  
468-XXXX  
OPERATOR ASSISTANCE  
468-1110  
WARNER ROBINS GA  
478-926-1110

SCOTT AFB  
576-XXXX  
OPERATOR ASSISTANCE  
576-1110  
BELLEVILLE IL  
618-256-1110

SCHRIEVER AFB  
560-XXXX  
OPERATOR ASSISTANCE  
560-1110  
COLORADO SPRINGS CO  
719-567-1110

SEYMOUR JOHNSON AFB  
722-XXXX  
OPERATOR ASSISTANCE  
722-1110  
GOLDSBORO NC  
919-722-1110

SHAW AFB  
965-XXXX  
OPERATOR ASSISTANCE  
965-1110  
SUMTER SC  
803-895-1110

SHEPPARD AFB  
736-XXXX  
OPERATOR ASSISTANCE  
736-1110  
WICHITA FALLS TX  
940-676-2511

TINKER AFB  
884-XXXX  
OPERATOR ASSISTANCE  
884-1110  
OKLAHOMA CITY OK  
405-732-7321

TRAVIS AFB  
837-XXXX  
OPERATOR ASSISTANCE  
837-1110  
FAIRFIELD CA  
707-424-5000/1110

TYNDALL AFB  
523-XXXX  
OPERATOR ASSISTANCE  
523-1110  
PANAMA CITY FL  
850-283-1113

USCENTCOM  
968-XXXX  
OPERATOR ASSISTANCE  
968-1110  
MACDILL FL  
813-828-1110

VANCE AFB  
448-XXXX  
OPERATOR ASSISTANCE  
448-7110

ENID OK  
580-213-5000

VANDENBERG AFB  
276-XXXX  
OPERATOR ASSISTANCE  
276-1110  
LOMPOC CA  
805-606-1110

WARNER ROBBINS AFB  
468-XXXX  
OPERATOR ASSISTANCE  
468-1001  
WARNER ROBBINS, GA  
478-926-1001

WESTOVER ARB  
589-XXXX  
OPERATOR ASSISTANCE  
589-1110 (0600-2345)  
CICOPEE, MA  
413-557-1110

WEST POINT MILITARY  
ACADEMY  
688-XXXX  
OPERATOR ASSISTANCE  
688-4011 M - F (0700-1700)  
WEST POINT NY  
914-938-4011

WHITEMAN AFB  
975-XXXX  
OPERATOR ASSISTANCE  
975-1110  
KNOBNOSTER MO  
660-687-1110

WRIGHT-PATTERSON AFB  
787-XXXX  
OPERATOR ASSISTANCE  
787-1110  
DAYTON OH  
937-257-1110

**DSN QUICK REFERENCE NUMBERS FOR PACIFIC AREA**

DSN INFORMATION (WORLDWIDE)	312-560-1110	MISAWA AB, JA OPERATOR	226-1110
CAMP ZAMA AB, JA OPERATOR	260-1110	OSAN AB, OPERATOR	784-4110
DIEGO GARCIA OPERATOR	370-0111	RIYADH, SW ASIA OPERATOR	318-252-1110
HAWAII SWITCH (PEARL HARBOR)	430-0111	TAEGU AB, RK (VIA KOREA SWITCH)	723-1101
IWAKUNI AB, JA OPERATOR	250-1110	TIME HACK (EASTERN)	312-762-1401
KADENA AB, JA OPERATOR	630-1110	TIME HACK (UNIVERSAL)	312-762-1401
KOREA SWITCH OPERATOR	723-1101	WAKE ISLAND	424-2101
KUNSAN AB, RK OPERATOR	782-1110	YOKOTA AB, JA OPERATOR	225-1110
KWAJALEIN OPERATOR	312-254-1110	YOKOSUKA, JA OPERATOR	243-1110
MILITARY INFO (PEARL HARBOR/HAWAII WIDE)	449-7110	YONG-SAN AB, RK (KOREA SWITCH)	723-1101

**Time Zone Conversion Table**

KOREA/JAPAN	GUAM	HAWAII	PACIFIC	MOUNTAIN	CENTRAL	EASTERN	GERMANY	THAILAND	PHILIPPINES
0100	<b>0200</b>	0600	0800	0900	1000	1100	1700	2300	2400
0200	<b>0300</b>	0700	0900	1000	1100	1200	1800	2400	0100
0300	<b>0400</b>	0800	1000	1100	1200	1300	1900	0100	0200
0400	<b>0500</b>	0900	1100	1200	1300	1400	2000	0200	0300
0500	<b>0600</b>	1000	1200	1300	1400	1500	2100	0300	0400
0600	<b>0700</b>	1100	1300	1400	1500	1600	2200	0400	0500
0700	<b>0800</b>	1200	1400	1500	1600	1700	2300	0500	0600
0800	<b>0900</b>	1300	1500	1600	1700	1800	2400	0600	0700
0900	<b>1000</b>	1400	1600	1700	1800	1900	0100	0700	0800
1000	<b>1100</b>	1500	1700	1800	1900	2000	0200	0800	0900
1100	<b>1200</b>	1600	1800	1900	2000	2100	0300	0900	1000
1200	<b>1300</b>	1700	1900	2000	2100	2200	0400	1000	1100
1300	<b>1400</b>	1800	2000	2100	2200	2300	0500	1100	1200
1400	<b>1500</b>	1900	2100	2200	2300	2400	0600	1200	1300
1500	<b>1600</b>	2000	2200	2300	2400	0100	0700	1300	1400
1600	<b>1700</b>	2100	2300	2400	0100	0200	0800	1400	1500
1700	<b>1800</b>	2200	2400	0100	0200	0300	0900	1500	1600
1800	<b>1900</b>	2300	0100	0200	0300	0400	1000	1600	1700
1900	<b>2000</b>	2400	0200	0300	0400	0500	1100	1700	1800
2000	<b>2100</b>	0100	0300	0400	0500	0600	1200	1800	1900
2100	<b>2200</b>	0200	0400	0500	0600	0700	1300	1900	2000
2200	<b>2300</b>	0300	0500	0600	0700	0800	1400	2000	2100
2300	<b>2400</b>	0400	0600	0700	0800	0900	1500	2100	2200
2400	<b>0100</b>	0500	0700	0800	0900	1000	1600	2200	2300

## OVERSEAS QUICK REFERENCE LISTING

### PACIFIC LISTING

#### DSN ACCESS CODE: 315

(NOTE: For Pacific Theater calls, dial direct, 7-digit number only. For Alaska calls, dial DSN access code, 317 plus 7-digit number)

#### ALASKA - DSN ACCESS CODE: 317

Clear AFS	585-6110
Eielson AFB	377-1110
Elmendorf AFB	552-1110
Fort Richardson	384-1110
Fort Wainwright (via Ft Richardson)	353-1110

#### GUAM

Andersen AFB	366-1110
Navy	355-1110

#### HAWAII

Hickam AFB	430-1110
Hickam Military Information	449-7110

#### JAPAN

Camp Zama	260-1110
Iwakuni MCAS	250-1110
Kadena AB	630-1110
Misawa AB	226-1110
Yokosuka Naval Base	243-1110
Yokota AB	225-1110

#### KOREA

Korea Switch	723-1101
Kunsan AB	782-1110
Osan AB	784-4110
Taegu AB (via Korea Switch)	723-1101

#### OTHER REGIONAL BASES

Diego Garcia	370-1110
Kwajalein	312-254-1110
Marshall Islands	312-254-1110

### CARIBBEAN LISTING

#### DSN ACCESS CODE: 313

(NOTE: Dial "0" for DSN assistance to these areas).

Bahamas (via W. Palm Beach)	312-483-7930
Fort Buchanan ( Puerto Rico)	312-740-3402

### EUROPE LISTING

#### DSN ACCESS CODE: 314

(NOTE: Dial "0" for assistance to these areas).

#### BELGIUM

SHAPE	423-7111
-------	----------

#### GERMANY

Pirmasens	495-1110
Ramstein	480-1110
Rhein Mein	330-1110
Sembach	496-1110
Spangdahlem	452-1110
Stuttgart	495-1110
Weisbaden (via Heidelberg)	337-1110

#### ITALY

Aviano AB	632-1110
Naples	625-1110
Vicenza	634-1110

#### SPAIN

Rota	727-3000
------	----------

#### TURKEY

Incirlik	676-1110
Izmir	675-8111
Pirincirlik (via Incirlik)	676-1110

#### UNITED KINGDOM

Lakenheath	226-1110
Mildenhall	238-1110
Molesworth	268-1110

### AUSTRALIA

#### DSN ACCESS CODE: 715

To contact the anywhere in Australia:

Dial 715-225-5287/

Dial tone

Dial 2-4-587-3111 for operator assistance

For official calls only

**A**

AAFB Comm Focal Point	20011	36 CS	366-2666
AAFES Auto Pride	26051	AAFES	653-9386
			653-2886
AAFES Barber Shop	24016	AAFES	653-8599
AAFES Baskin Robbins	24016	AAFES	653-0545
AAFES Car Sales	24016	AAFES	653-7741
AAFES Charley's Steakery	24016	AAFES	653-0545
AAFES Computer Repair	24016	AAFES	653-7669
AAFES Docomo Pacific	24016	AAFES	688-2355
			Ext 2621
AAFES Dunkin Donuts	24016	AAFES	653-0545
AAFES Food Court Manager	24016	AAFES	366-3120
AAFES Gas Station	26101	AAFES	653-0545
AAFES General Manager	24016	AAFES	653-4677
			653-6210
			366-3103
AAFES GTA Booth	24016	AAFES	644-4482
			653-1543
			653-1552
			653-6266
AAFES Home Traditions	24016	AAFES	653-1136
AAFES Human Resources	24016	AAFES	653-4085
AAFES Jewelry Counter	24016	AAFES	653-3737
AAFES Main BX Customer Service	24016	AAFES	653-1141
			653-1136
AAFES Meehan Theater	22023	AAFES	366-1523
AAFES Military Clothing Sales	24016	AAFES	653-8624
AAFES NAPA Representative	24016	AAFES	366-8518
			653-5391
AAFES National Guard Gas Station (Barrigada)	600	AAFES	734-1409
AAFES National Guard Shoppette (Barrigada)	100	AAFES	734-0902
AAFES NISSAN Car Rental After Hours	17002	AAFES	653-7368
	GIAA		649-0110
AAFES Petals & Bloom	24016	AAFES	653-7200
AAFES Pizza Hut	24016	AAFES	653-4812
AAFES Popeyes	24016	AAFES	653-0545
AAFES Power Zone	24016	AAFES	654-3736
AAFES Rosewood Shop	24016	AAFES	653-3443
AAFES Saipan Annex Troop Store	SAIPN	AAFES	(670) 322-6681
AAFES Services Business Manager	24016	AAFES	653-8179
AAFES Shoppette Class Six	25005	AAFES	653-8143
AAFES Specialty/Gift Shop	24016	AAFES	653-8625
AAFES Stripes (Alterations)	24016	AAFES	653-8595
AAFES Stylique	24016	AAFES	653-8598
AAFES Subway	24016	AAFES	653-6775
AAFES Taco Bell	24016	AAFES	653-4817
AAFES The Cleaners	24016	AAFES	653-8596
AAFES The Spa	24016	AAFES	653-7858
AAFES Vitamin World Action Line	24016	AAFES	653-2547
	23003	36 WG	366-8255
Aerospace Medicine	26000	36 MDOS	366-9355
Airman's Attic	1558AB	36 FSS	366-8217
Airman & Family Readiness Center	22026	36 FSS	366-8136
Airman Leadership School	21006	36 FSS	366-6292
Air Mobility Control Center	17002	734 AMS	366-2961
Air Terminal Operations Center	17002	734 AMS	366-6072
Air Traffic Control, Chief	18015	36 OSS	366-4281
Allied Trades	18042	DZSP 21	366-5236
American Red Cross			472-6217/9

Navy Liaison  
Emergency Service344-9940  
1 877/272-  
7337

Andersen Lodging	27006	36 FSS	979-5501/2 979-2201
Area Defense Counsel	23008	DET QD7H	366-2281
Arts & Crafts	25005	36 FSS	366-2220 366-4248
Auto Skill Center Shop	26051	36 FSS	366-2745

**B**

Bamboo Willies	9509	36 FSS	366-2730
Bank of Guam	21000		653-8371
Base Distributions (BITC)	24018	36 CS	366-5259
Base Library	21000	36 FSS	366-4291
Base Radio Systems	20011	36 CS	366-5147
Base Service Store	18002		653-4680
Bio-environmental Engineering	17000	36 MDOS	366-7166
Bowling Center/Gecko Lanes	25005	36 FSS	366-5117 653-9713

**C**

Capehart Pool	1621	36 FSS	366-3202
Career Enhancement, Chief	21000	36 FSS	366-3276
Cashier's Cage, Consolidated Club	26006	36 FSS	366-6166
Casualty Assistance Representative	23028	36 FSS	366-3688
CE Customer Service	18001	36 CES	366-2916
Chapel 1 Administration	22024	36 WG	366-6139
Chapel 2 Administration	1823	36 WG	366-6139
Child Development Center	1625	36 FSS	366-1601 366-1602
Claims Office	21000	36 WG	366-2938
Collocated Club (TOR)	26006	36 FSS	366-6166
Combat Arms Training and Maintenance	23018	36 SFS	366-2254
Commander's Action Line	23028	36 WG	366-5463
Command Post	23028	36 WG	366-2981
Commando Warrior		36 FSS	362-6012
Commissary Bakery	22021	DECA	366-4782
Commissary Customer Service	22021	DECA	366-5159
Commissary Deli	22021	DECA	366-4782
Commissary Grocery Manager	22021	DECA	366-5136
Commissary ID Check Desk	22021	DECA	366-2264
Commissary Meat Dept	22021	DECA	366-3294
Commissary Produce Dept	22021	DECA	366-5210
Commissary Store	22021	DECA	366-5134
Director			
Computer Repair	20011	36 CS	366-2699
COMSEC Accountant	23002	36 CS	366-2777
Conservation Officer	22007	36 CES	366-3835
Contracting, Superintendent	22026	36 CONS	366-6621
Conventional Maintenance	9100	36 MUNS	366-3070
Coral Reef Fitness Center	25045	36 FSS	366-6100
Crime Stop Line	21000	36 SFS	366-6666
Customer Service Desk - MPF	22026	36 FSS	366-2276
Customer Service Desk - Multimedia	21001	36 WG	366-2228
Customer Service - Supply	18002	DZSP 21	366-3781
Customer Service - TRNS	18001	DZSP 21	366-4311

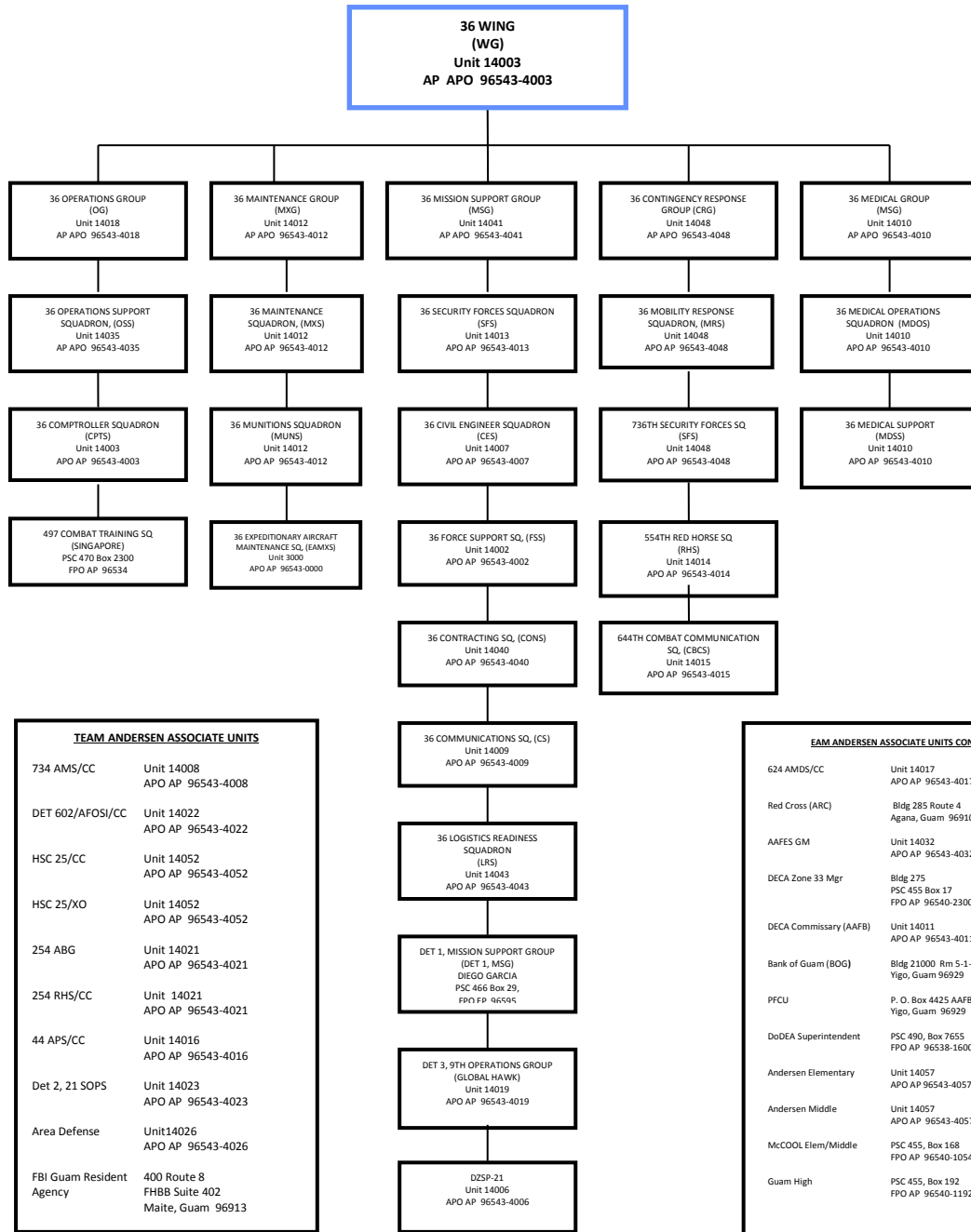
**D**





Personnel Property HHG: Inbound Outbound	18002	DZSP 21	333-2045 366-3708	Survivor Benefits Plan	23008	36 FSS	366-3681
Pet Lodge/Quarantine	20016	36 FSS	366-5020	<b><u>H</u></b>			
Performance Reports	22026	36 FSS	366-6176	Telephone Maintenance	25008	36 CS	119
PERSCO, NCOIC	22026	36 FSS	366-5195	TERPS	18015	36 OSS	366-4306
PERSCO	22026	36 FSS	366-3152	The Pacific Edge, Editor	23003	36 WG	366-5603
Personnel Employment	22026	36 FSS	366-8113	TRICARE Service Center	26000	36 MDSS	366-6547
Personnel Readiness, Chief	22026	36 FSS	366-3457	<b><u>U</u></b>			
Personnel Relocation	22026	36 FSS	366-6797	University of Maryland	21000	36 FSS	366-7132
Personnel Systems	22026	36 FSS	366-6761				366-1425
Pharmacy	26000	36 MDSS	366-5271	University of Oklahoma	21000	36 FSS	366-5275
Pharmacy Refills	26000	36 MDSS	366-5610	University of Phoenix	21000	36 FSS	366-6226
PMEL Scheduling	17000	36 MXS	366-6653	USDA Wildlife Services	2797		366-3822
Postal Service Center	24018	36 CS	366-5259	<b><u>V</u></b>			
Promotions Section	22026	36 FSS	362-4947	Vehicle Dispatch	18001	DZSP 21	366-2239
Protocol Officer	23003	36 WG	366-1320	Vehicle Maintenance	18001	DZSP 21	366-6202
Public Affairs	21001	36 WG	366-4202	Veterinary Clinic	20011	36 FSS	366-3205
<b><u>R</u></b>				Video Documentation- Production	21001	36 WG	366-2228
Radiology	26000	36 MDSS	366-5112	Visitor's Control Center	2403	36 SFS	366-4230
Real Estate Office	18001	36 CES	366-5055	<b><u>W</u></b>			
Receiving	18002	DZSP 21	366-3772	War Reserve Material	17000	36 LRS	366-2331
Records Management	21001	36 CS	362-4758	Weapons Safety	23003	36 WG	366-4222
Reports and Analysis Clerk	23020	36 SFS	366-6761	Weather Flight	17002	36 OSS	366-5230
Resource Control Center (24 Hrs)	26023	36 LRS	366-6291	Weather Observer	17002	36 OSS	366-5230
<b><u>S</u></b>				Wing Inspector General	23028	36 WG	366-6845
Safety Division, Chief	23003	36 WG	366-3345	<b><u>Y</u></b>			
SATO World Travel	22002		653-1130	Youth Activities Center	1622	36 FSS	366-3491
SSAM Shuttle			689-7726				
Security Police Armory	23020	36 SFS	366-3110				
Security Police Investigations	23020	36 SFS	366-6128				
Self Help Store	22007	36 CES	366-3165				
Sexual Assault Response Coordinator	21000	36 WG	366-SARC (7272)				
Shoppette	25005	AAFES	653-8143				
Sirena Beach		36 FSS	366-2544				
Special Actions	23008	36 FSS	366-6961				
Storage and Issue	18002	DZSP 21	366-3214				
Straight Talk Line	23003	36 WG	366-8255				
Sunrise Conference Center	1091	36 WG	366-4654				
Support Agreements	17000	36 LRS	366-3011				

# ANDERSEN ORGANIZATIONAL LISTING



## 36TH WING (WG)

OFF SYM	OFFICE NAME	PHONE	BLDG
CC	Commander	366-3600	23003
CV	Vice Commander	366-3600	23003
CCS	Secretary	366-3600	23003
CCE	Executive Officer	366-3602	23003
CVE	Executive Officer	366-3601	23003
CCC	Command Chief Master Sergeant	366-3604	23003
CCCE	Executive Asst to Command Chief Master Sergeant	366-3089	23003
CCEA	Wing Information Management, Superintendent	366-3693	23003
	Wing Information Management, NCOIC	366-3603	23003
	Wing Information Management, NCOIC	366-3626	23003
	Command Section FAX	366-6060	23003
CCP	Protocol, NCOIC	366-1320	23003
	Protocol (Answering Machine)	366-1320	23003
CP	Command/Control Division	366-2981	23028
	Command/Control Division, PACAF Superintendent	366-9950	23028
	Command/Control Division, AMC Superintendent	366-9952	23028
	Command/Control Division, STU III	366-8291/8294	23028
CVK	Sexual Assault Response Program Office	366-7714	1546 Marianas Blvd
	Sexual Assault Response Assistant	366-7715	
	Sexual Assault Response HOTLINE	366-SARC (7272)	
IG	Wing Inspector General	366-6845	18006
IGQ	Inspector General Division, Complaints Resolution	366-5258	18006
IG	Inspector General Division, Superintendent, Exercises & Inspections	366-5614	18006
	Inspector General Division, NCOIC & Inspections	366-5615	18006
	Inspector General Division, Director of Inspections	366-3088	18006
	Inspector General Complaints/FWA HOTLINE	366-5367	18006
HC	Base Chapel	366-6139	22024
	Base Chapel FAX	366-5154	22024
HO	Historian	366-2111	21000
JA	Staff Judge Advocate	366-2937	17000
	SJA Secretary	366-2937	17000
JAA	Administrative Law	366-2937	17000
JAD	Claims Office	366-2938	17000
JAM	Military Justice	366-2939/6045	17000
MEO	Military Equal Opportunity	366-5111	21000
	Military Equal Opportunity FAX	366-1469	21000
PA	Public Affairs, Chief	366-5606	21001
	Public Affairs, Superintendent	366-5603	21001
	Public Affairs, Administration	366-4202	21001
	Public Affairs, Community Relations	366-4111	21001
	Public Affairs, Media Relations	366-2837	21001
	Public Affairs FAX	366-1432	21001
	Straight Talk Line	366-2228	23003

SE	Safety Division, Chief	366-3345	18006
	Wing Safety	366-7233	18006
SEF	Flight Safety	366-3325	18006
SEG	Ground Safety Manager	366-7233	18006
SEW	Weapons Safety	366-4222	18006

### 36th Comptroller Squadron (CPTS)

OFF SYM	OFFICE NAME	PHONE	BLDG
CC	Commander	366-7200	22026
CCE	Superintendent	366-3975	22026
CCF	First Sergeant	366-3975	22026
CSS	Commander's Support Staff	366-7200	22026
FMA	Financial Analysis	366-6795/90	22026
FMFC	Civilian Pay	366-4923	22026
	Customer Service	366-1770	22026
	Military Pay	366-1770	22026
FMFD	Disbursing/Cashier	366-8251	22026
FMFL	Accounting Liaison	366-6115	22026
FMFS	Customer Support	366-1048	22026

## 36TH OPERATIONS GROUP (OG)

OFF SYM	OFFICE NAME	PHONE	BLDG
CC	Commander	366-3662	17000
CD	Deputy Commander	366-3663	17000
CCF	First Sergeant	366-3669	17000
CCS	Secretary	366-3664	17000

### 36th Operations Support Squadron (OSS)

OFF SYM	OFFICE NAME	PHONE	BLDG
CC	Commander	366-1008	17002
CSS	Commander's Support Staff	366-1008 366-2332	17002
CSS	Commander's Support Staff, FAX	366-1165	17002
CCF	First Sergeant	688-8466	17002
DO	Director of Operations	366-1016	17002
OSX	ADO, Operations Branch	366-3026	25002
	Chief, Current Operations	366-4722	25002
	Operations Plans, Flight Commander	366-2385	25002
	Operations Plans, FAX	366-4529	25002
	TBMCS-UL Trainer	366-3037	25002
	Intel, Flight Commander	366-1428 366-1056	25002
OSA	Commander, Airfield Ops Flight	366-2781	17002
OSAM	Airfield Manager	366-1196	17002
OSAM	Airfield Operations	366-4188 366-5212	17002
OSAT	Chief, Air Traffic Control	366-3416	18015
	ATC, Training	366-2172	18015
	TERPS	366-4306	18015
OSW	Commander, Weather Flight	366-3176	17002
	Chief, Weather Station Operations	366-1407	17002
	Weather Flight	366-5230	17002

**497TH COMBAT TRAINING FLIGHT (CTF)  
PAYA LEBAR AIR BASE (PLAB)  
SINGAPORE, HANGAR 3 – DSN (421-XXXX)**

OFF SYM	OFFICE NAME	PHONE	BLDG
CC	Commander	421-2821	SINGA
LGMG	Aircraft Ground Equipment	6311-9651	SINGA
LGMS	Crew Chief	421-2821	SINGA
LGTV	Transportation	421-2821	SINGA
	Fax	6311-9658	SINGA

MXM	Operations Officer	366-1942	18006
	Squadron Superintendent	366-6121	18006
	Lead Production Superintendent	366-4621	18006
MXMC	Accessories Flight/Electrical & Environmental	366-4052	18006
MXMD	PMEL	366-3047	17000
MXMQ	PMEL QAE	366-6653	18006
MXMFM	Fabrication Flight/Metals Technology	366-3159	18006
	Non-Destructive Inspection Section	366-2292	17006
MXMFS	Aircraft Structural Maintenance	366-3166	18006
MXMG	Aerospace Ground Equipment (AGE) Flight	366-2227	18004
	AGE Production Superintendent	366-4578	18004
	AGE FAX	366-3818	18004
MXMGB	Bomber AGE	366-3815	18004
MXMGD	Wing AGE	366-4579	18004
MXMGS	AGE Production Support/Supply	366-3818	18004
MXMGW	AGE WRM	366-5680	18004
MXMT	Maintenance Flight	366-1506	18017
TA	Transient Alert	366-7912/8013	17996

**AMC at PAYA LEBAR AIR BASE (PLAB)  
(SINGAPORE – COMMERCIAL ONLY - Country Code: 65)**

OFF SYM	OFFICE NAME	PHONE	BLDG
AMC	Commander	9722-9079	SINGA
MX	Superintendent	9172-6923	TR
TR	Superintendent	9770-2147	SINGA
AMC	Terminal Manager	9862-5262	SINGA
	Terminal Assistant Manager	6287-5423	SINGA
	Terminal	6381-3652	SINGA
	FAX	6287-5418	SINGA

**36TH MAINTENANCE GROUP (MXG)**

OFF SYM	OFFICE NAME	PHONE	BLDG
CC	Commander	366-6150	17000
CD	Deputy Commander	366-6152	17000
CCC	Superintendent	366-6160	17000
CCS	Secretary	366-2685	17000
CCE	Executive Assistant	366-2119	17000

**36th MUNITIONS SQUADRON (MUNS)**

OFF SYM	OFFICE NAME	PHONE	BLDG
CC	Commander	366-6867	9002
CCS	Secretary	366-6867	9002
CCF	First Sergeant	366-8820	9002
CSS	Commander Support Staff	366-6865	9002
MXW	Munitions Operations Officer	366-6313	9000
	Munitions Superintendent	366-6308	9000
	Unit Environmental Coordinator	366-7350	9000
MXWC	Material Flight Supervision	366-1927	9034
	Chief, Materiel Flight	366-3287	9034
MXWCB	Munitions Inspection	366-8497	9010
MXWCA	Munitions Accountability	366-4542	9000
MXWCC	Storage and Handling	366-5932	9000
MXWK	Systems Flight Supervision	366-6301	9001
MXWKA	Munitions Control	366-6300	9000
	Unit Control Center	366-6300	9000
MXWKD	Ground Safety	366-4528	9000
	Standardization and Training	366-4536	9000
MXWP	Production Flight Supervision	366-5280	9001
MXWPA	Conventional Maintenance	366-5361	91015
MXWPB	Line Delivery	366-9017	9016
MXWPD	Equipment Maintenance	366-4904	9001
MXWM	Weapons Flight Supervision	366-2471	51104
MXWMM	CALCM	366-1447	51109
MXWWR	Armament	366-3188	51104
MXWX	Facilities Manager	366-7350	9000
	Unit Deployment Monitor	366-6304	9000
MXOP	Unit Security Manager	366-4622	18006

**36th MAINTENANCE OPERATIONS FLIGHT (MXO)**

OFF SYM	OFFICE NAME	PHONE	BLDG
MXO	Operations Superintendent	366-4637	17000
CCR	Resource Advisor	366-1944	17000
MXOA	IMDS Database Management	366-3312	17000
MXOC	Maintenance Ops Center (MOC)	366-4321	17000
MXOP	Programs & Resources Section Chief	366-3378	17000
	Security Manager	366-4622	17000
	Unit Deployment Manager (UDM)	366-5059	17000
	Plans and Scheduling	366-3376	17000
MXOT	Training Manager	366-1833	17000

**36TH MAINTENANCE SQUADRON (MXS)**

OFF SYM	OFFICE NAME	PHONE	BLDG
CC	Commander	366-6122	18006
CCF	First Sergeant	366-4635	18006
UPC	Unit Program Coordinator	366-2847	18006
	UPC FAX	366-4620	18006
CCSE	Vehicle Control NCO (VCNCO)	366-1842	18006
CCSE	Unit Safety Rep (USR)	366-1942	18006

MXWKO Vehicle Control Officer 366-4536 9000

NCOIC, Mental Health Flight 366-5125 21000

NCOIC, Psychological Services 366-5128 21000

Mental Health Admin 366-5125 21000

SGOHA ADAPT Coordinator 366-5125 21000

Drug Demand Reduction 366-8018 21000

SGOHM Coordinator Family Advocacy Officer 366-8217 21000

Family Advocacy Nurse 366-2381 21000

Family Advocacy Outreach Manager 366-5155 21000

NCOIC, Family Advocacy 366-5125 21000

Family Advocacy Program Asst 366-5125 21000

Family Advocacy Treatment 366-5125 21000

SGOK Manager Clinical Medicine Flight Commander 366-6554 26000

Family Practice 366-5819 26000

SGOKE Optometry Clinic 366-6571 26000

Optometry Front Desk 366-6749 26000

SGOKF NCOIC, Clinical Medicine Flight 366-6555 26000

Appointment Access 366-9655 26000

Appointment Cancellations 366-2456 26000

Director of Utilization Management 366-4734 26000

NCOIC, OB/GYN 366-4735 26000

**36th Medical Support Squadron (MDSS)**

**36TH MEDICAL GROUP (MDG)**

OFF SYM	OFFICE NAME	PHONE	BLDG
CC	Commander	366-4270	26000
SGN	Chief Nurse	366-4270	26000
SGE	Executive Assistant	366-4270	26000
CCC	Group Superintendent	366-6536	26000
CCF	First Sergeant	366-6541	26000
CSS	NCOIC, Personnel	366-8292	26000
CSS	Personnel Clerk	366-6561	26000
	Medical Appointments	366-WELL (9355)	26000

**36th Medical Operations Squadron (MDOS)**

OFF SYM	OFFICE NAME	PHONE	BLDG
CC	Commander	366-6549	26000
CCS	Administrative Assistant	366-6583	26000
SGOKF	Superintendent	366-7387	26000
SGH	Chief, Medical Staff	366-6595	26000
	Credentials Monitor	366-3882	26000
SGOA	Commander, Aerospace Medical Flight	366-8700	26000
	Aerospace Medical Flight Reception Desk	366-9355	26000
SGOAB	Bio-environmental Engineering	366-7166	26000
	NCOIC, Bio Engineering	366-7166	26000
SGOAF	Chief, Flight Medicine	366-6533	26000
	NCOIC, Flight Medicine	366-6258	2600
	Aerovac and MEB	366-6559	26000
	HC-5 Flight Surgeon	366-6533	26000
	LPO, HC-5 Medical	366-5011	26000
	Chief, CRS	366-1472	26000
	NCOIC, CRS Medical	366-3116	26000
SGOAH	Immunizations	366-8220	26000
	NCOIC, Occupational Health	366-4881	26000
	Chief, Public Health	366-4147	26000
	NCOIC, Public Health	366-4147	26000
SGOAP	Health & Wellness Center Manager	366-2494	25005
	NCOIC, Health Promotions	366-3199	26000
	Fitness Program Manager	366-2497	26000
	Physical Therapy	366-419	26000
SGOAR	NCOIC, Medical Readiness	366-7125	26000
	Medical Readiness Training	366-5146	26000
SGOAV	AAFB Veterinary Service	366-3205	20011
SGOD	Dental Flight Commander	366-6500	26000
	Secretary	366-3234	26000
	Dental Flight	366-3211	26000
	NCOIC, Dental Flight	366-6514	26000
SGODD	OIC, Clinical Dentistry Element	366-3211	26000
SGODL	OIC, Dental Laboratory Element	366-3211	26000
SGODS	OIC, Dental Support Element	366-3211	26000
SGOH	Mental Health Flight Commander	366-5125	21000

OFF SYM	OFFICE NAME	PHONE	BLDG
SGOHA	ADAPT Coordinator	366-5125	21000
SGOHM	Drug Demand Reduction Coordinator	366-8018	21000
	Family Advocacy Officer	366-8217	21000
	Family Advocacy Nurse	366-2381	21000
	Family Advocacy Outreach Manager	366-5155	21000
	NCOIC, Family Advocacy	366-5125	21000
	Family Advocacy Program Asst	366-5125	21000
	Family Advocacy Treatment Manager	366-5125	21000
SGOK	Clinical Medicine Flight Commander	366-6554	26000
	Family Practice	366-5819	26000
SGOKE	Optometry Clinic	366-6571	26000
	Optometry Front Desk	366-6749	26000
SGOKF	NCOIC, Clinical Medicine Flight	366-6555	26000
	Appointment Access	366-9655	26000
	Appointment Cancellations	366-2456	26000
	Director of Utilization Management	366-4734	26000
	NCOIC, OB/GYN	366-4735	26000

OFF SYM	OFFICE NAME	PHONE	BLDG
CC	Commander	366-3927	26000
CCS	Administrative Assistant	366-6552	26000
SGSL	Superintendent, Medical Support Squadron	366-1262	26000
SGSI	Information Services Flight Commander	366-2463	26000
	NCOIC, Information Management	366-4243	26000
	NCOIC, Information Services	366-8292	26000
	Information Management Technician	366-4243	26000
	NCOIC, Information Technology	366-4688	26000
	CHCS Systems Specialist	366-3335	26000
	LAN Systems Specialist	366-3334	26000
	Lead Systems Specialist	366-4738	26000
SGSL	Medical Logistics Flight Commander	366-6629	26000
	NCOIC, Medical Logistics	366-6623	26000
SGSLA	NCOIC, Leader, Storage & Distribution	366-6634	26000
	Biomedical Maintenance	366-6630	26000
	Materiel Control	366-6644	26000
	Medical Warehouse	366-5184	26000
	Customer Service	366-5184	26000
SGSLF	Facilities Manager	366-5395	26000
SGSR	Commander, Resource Management	366-6315	26000
	NCOIC, BOBS Flight	366-1262	26000
	NCOIC, Resource Management Flight	366-6543	26000
	Resource Management Flight	366-2479	26000
	Reports and Analysis/MEPRS	366-6559	26000

	Cashier	366-6559	26000		Quality Advisor	366-6390	18001
SGST	NCOIC, TRICARE Service Center	366-6547	26000	CEOA	Materiel Control Element	366-2137	18001
	Beneficiary Counseling/Assistant Coordinator	366-6548	26000		Materiel Control Element – HOLDING AREA	366-5091	18001
	General Practice Management	366-2416	26000		Materiel Control FAX	366-5091	18001
	Outpatient Records	366-5819	26000	CEOC	Controller, Heavy Repair	366-2483	18001
	TRICARE Enrollment Specialist	366-6545	26000		Controller, Infrastructure/Utilities Supply	366-8229	18001
SGSA	Diagnostic & Therapeutics Flight Commander	366-7455	26000		Customer Service	366-2916	18001
SGSAL	Chief, Laboratory Services	366-4116	26000	CEOD	Deputy Chief, Operations	366-2917	18001
	NCOIC, Laboratory	366-6580	26000	CEODA	Admin, Operations Flight	366-5026	18001
SGSAP	NCOIC, Pharmacy	366-5271	26000	CEODV	Vehicle Control Element	366-5190	18001
SGSAR	Radiology	366-5112	26000	CEOEE	Maintenance Engineering	366-5013	18001
				CEOF	Facility Management	366-1029	18001
				CEOFF	Foreman, Paint Shop	366-3387	18001
				CEOFS	Self-Help Landscaping	366-5032	18001
				CEOFS	Self-Help Store	366-3832	22007
				CEOI	Infrastructure/Utilities Support	366-3165	22007
				CEOR	Chief, Heavy Repair	366-5028	18001
				CER	Chief, Resources Flight	366-6390	18001
					Resources Flight FAX	366-5055	18001
				CERR	Real Estate Office	366-1182	18001
						366-1670	18001
						366-6169	18001
				CERU	Chief, Financial Management	366-5061	18001
					Financial Management	366-5057	18001
						366-5065	18001
				CERW	Work Information Management	366-2908	18001
						366-2909	18001
				CEV	Environmental Flight	366-2101	18001
					Environmental Flight t Chief	366-2556	18001
					Environmental FAX	366-5088	18001
				CEVN	Cultural/Natural Resources/Conservation Resources	366-1849	18001
				CEVN	Wildlife Management	366-5078	18001
				CEVP	Pollution Prevention Chief	366-2557	18001
					Hazardous Waste Storage	366-4901	19017
					Recycling Center	366-1477	18001
				CEVQ	Environmental Quality Chief	366-2963	18001
				CEVQ	Conservation Officer	366-3049	22007
				CEVR	Installation Restoration Program Chief	366-4692	18001
				CEX	Readiness Flight	366-4298	18001
					Emergency Management	366-4180	18001

## 36TH MISSION SUPPORT GROUP (MSG)

OFF SYM	OFFICE NAME	PHONE	BLDG
CC	Commander	366-4551	23008
CD	Deputy Commander	366-4559	23008
CCS	Secretary	366-4553	23008
CCE	Executive Officer	366-4594	23008
CCC	Superintendent	366-4552	23008
CCEA	Information Management	366-2323	23008
	MSG FAX	366-4644	23008

## 36th Civil Engineer Squadron (CES)

OFF SYM	OFFICE NAME	PHONE	BLDG
CC	Commander	366-7101	18001
DCE	Deputy Base Civil Engineer	366-5545	18001
CCS	Secretary	366-7101	18001
CCF	First Sergeant	366-8523	18001
CEM	Squadron Superintendent	366-5538	18001
CSS	Commander's Support Staff	366-7108	18001
	Commander's Support Staff, FAX	366-5684	18001
CEC	Chief, Engineering Flight	366-7104	18001
CECB	Base Community Planner	366-2075	18001
	Chief Base Development	366-1288	18001
CECS	Chief, Saber	366-1263	18001
CED	Chief, Explosive Ordinance Disposal	366-5198	2600
CEF	Fire Protection – EMERGENCY ONLY	911	17002
CEF	Fire Protection – FAX	366-3331	17002
CEFA	Fire Protection Administration	366-6201	17002
CEFP	Fire Protection Prevention	366-5265	17002
CEH	Housing Maintenance	366-6240	1782
	Housing Management Office	366-2127	1723
	Housing Management Office – Admin	366-8143	1723
	Housing Management Office – FAX	366-2402	1723
FMO	Furnishings Management Office	366-4571	14530
		366-4572	
CEO	Chief, Operations	366-5025	18001

## 36th Force Support Squadron (FSS)

OFF SYM	OFFICE NAME	PHONE	BLDG
CC	Commander	366-4550	23028
DD	Deputy Commander	366-4221	23028
CCS	Commander's Secretary	366-4221	23028
		366-4550	
CCE	Superintendent	366-5630	23028
CCF	First Sergeant	366-4556	23028
CSS	Staff Assistant	366-2491	23028
FSK	Marketing Director	366-6157	22026
FSO	Operations Officer	366-1075	23028
		366-2491	

FSOX	Readiness & Plans	366-1039 366-2491	23028	FSVP	Community Center/Hot Spot	366-2339 366-2958	25005
	NCOIC, Personnel Readiness Unit	366-2231	23028	FSD	Flight Chief	366-2598	22026
FSOXU	NCOIC, Readiness	366-1039 366-2491	23028	FSDE	Team Chief, Base Training & Education	366-2590	21000
	NCOIC, Mortuary Affairs & Honor Guard	366-2492	23028		Base Training Manager	366-3879	21000
	Unit Deployment Manager	366-2965	23028		Education Technician	366-2591	21000
FSOT	Unit Training Manager	366-4882	22026		Education Services	366-3170	21000
FSM	Flight Commander	366-2311	22026		CCAF Advisor	366-2594	21000
FSM-1	Flight Superintendent	366-4387	22026		Central Texas College	366-7133	21000
FSMP	Commander, Military Personnel Section	366-6773	22026		UMUC-Asia	366-1425	21000
	Casualty Assistance Rep	366-3688	23028		University of Maryland	366-7132	21000
	Superintendent, Customer Support	366-5423	22026	FSDL	University of Phoenix	366-6226	21000
	Military Personnel Customer Support	366-2276	22026		Base Library Front Desk	366-4291	21000
					Librarian	366-3695	21000
	NCOIC, Customer Support	366-2276	22026	FSDP	Career Assistance Advisor	366-7829	21006
	Superintendent, Career Development	366-6773	22026		NCOIC, First Term Airman Center	366-1224	21006
	Career Development Section	366-7175	22026		First Term Airman Center	366-7830	21006
	Superintendent, Force Management	366-3308	22026	FSDA	Airman Leadership School	366-6292	21006
	Force Management Section	366-3689	22026		Commandant	366-6805	21006
	NCOIC, Force Management	366-3344	22026		Instructor	366-6806	21006
	Personnel Systems	366-6759	22026		Student Line/Break Room	366-6806	21006
	Awards & Decorations	366-6723	22026	FSC	FAX	366-4380	21003
FSMC	Civilian Personnel Section	366-3677	22026		Flight Chief	366-1018	23028
	Human Resources Specialist	366-2378	22026	FSCC	Deputy Flight Chief	366-5068	23028
FSMH	NAF Human Resources Officer	366-4750	22026		Top of the Rock Administration	366-6166	26006
	NAF Job Information & Referral	366-6141	22026		Catering	366-3581	26006
		366-4761			Café Latte	366-CAFÉ (2233)	26006
FSMM	Manpower & Organization Section	366-3800	22026		Bamboo Willies Beach Club	366-2730	9509
	Superintendent, MO	366-2274	22026	FSCG	Palm Tree Golf Course Manager	366-4655	1091
	IDEA Program	366-CASH (2274)	22026		Palm Tree Golf Course	366-7196	1091
FSV	Flight Commander	366-5068	23028		Superintendent		
FSVFP	Magellan Inn Dining Facility Manager	366-5158	25010		Palm Tree Golf Course Pro Shop	366-GOLF (4653)	
	Magellan Inn Dining Facility Office	366-5152	25010	FSCO	Mulligan's Grill	366-4654	1091
	Magellan Inn Dining Facility Kitchen	366-5466	25010		Outdoor Recreation Manager	366-5197	1605
	Flight Kitchen Manager	366-6368	25010		Outdoor Recreation Equipment	366-5204	1605
	Flight Kitchen Operations	366-5201	17002		Checkout		
	Flight Kitchen FAX	366-5202	17002		Dive Shop	366-6975	1605
FSVS	Coral Reef Fitness Center Front Desk	366-6100	25045		Camping HQ	366-8275	1605
	Coral Reef Fitness Center Director	366-2516	25045	FSCT	Serena Beach	366-2554	9602
	Coral Reef Fitness Center Military Section Chief	366-6220	25045		Andersen Pool/Capehart Pool	366-3202	1621
	Coral Reef Fitness Center Fitness Programs Director	366-4440	25045	FSCB	Arts and Crafts Director	366-2220	25006
	Coral Reef Fitness Center Sports Programs Director	366-6320	25045		Resale/Store/Frames	366-4248	25006
FSVL	Lodging General Manager	979-5518	27006		Gecko Lanes	366-5117	25005
	Assistant Lodging Manager	979-5511	27006	FSCI	Gecko Lanes Manager	366-5085	25005
	Lodging Operations Chief	979-5513	27006	FSCV	Gecko Lanes Assistant Manager	366-5039	25005
	Assistant Lodging Operations Manager	979-5501	27006		Gecko Grill Snack Bar	653-9713	25005
	Lodging Front Desk	979-5501/2	27006	FSCV	Information Tickets & Tours (ITT)	366-2586	1605
	Lodging Reservations	979-5501	27006	FSCV	Veterinary Clinic	366-3205	20011
	Linen Exchange	366-2198	21005	FSCV		366-2447	
				FSCCQ	Pet Lodge/Quarantine	366-5020	20016
				FSR	Resource Advisor	366-2212	23028
				FSOL	Logistics Warehouse	366-2542	14529
				FSRI	IT Systems	366-4874	23028
				FSF	Flight Chief	366-4745	23028



FSFR	Airman & Family Readiness Center	366-8136	22026		LMR Repeater Site	653-9348	70
	Community Readiness Consultant	366-8136	22026		DMSP Mystic Star	366-5700	2750
	Airman's Attic	366-8217	1558AB	SCOW	NCOIC, Cable Systems	366-2626	25008
	Air Force Aid Society	366-8136	22026	SCX	Plans & Resources Flight Commander	366-3941	23002
FSFC	Military Family Life Consultant	366-8136	22026		Flight Chief, Plans & Resources Flight	366-1086	23002
FSFF	Child Development Center Director	366-1601	1625	SCX-1	Section Chief, Knowledge Ops	362-4760	21001
		366-1602		SCXK	Pubs and Forms Manager	362-4758	21001
		366-1603			Section Chief, Postal (Postmaster)	366-5259	24018
		366-1604		SCXM	Section Chief, Plans & Implementation	362-4720	23002
FSFY	Family Child Care Coordinator	969-6012	1625	SCXP	NCOIC, Plans & Implementation	362-2703	23002
	School Age Program	366-7500	1625		Budget Analyst/Resource Advisor	366-3177	23002
	Teen Center	366-7706	25005	SCXPR	Section Chief, Wing Information Assurance	366-1020	23002
	Youth Program Director	366-1640		SCXS	COMSEC Manager	366-2777	23002
	Youth Sports	366-3492	1625	SCXSC			
		366-3490	25005				
		366-3491					

### 36th Communications Squadron (CS)

OFF SYM	OFFICE NAME	PHONE	BLDG
CC	Commander	366-2717	23002
CD	Deputy Commander	366-3940	23002
CCC	Squadron Superintendent	366-3000	23002
CCF	First Sergeant	366-2700	23002
CCS	Secretary	366-2149	23002
	FAX	366-8561	23002
CCQ	Personnel Clerk	366-1017	23002
		366-5250	
SCQ	Section Chief, Quality Assurance	362-2300	23002
SCO	Operations Flight Commander	366-2110	20011
SCO-1	Flight Chief, Operations Flight	366-2671	20011
SCO-2	OIC, Exec Comm/RWG	366-4141	20011
SCOA	Section Chief, ATCALs Maintenance	366-7238	20011
	NCOIC, Airfield Systems Maintenance	366-4201	20011
	NCOIC, Radar Systems Maintenance (NEXRAD)	366-7237	20011
SCOI	Section Chief, Infrastructure	362-4986	20011
SCOIA	NCOIC, Technical Control	366-3181	20011
	NCOIC, Cyber Transport	362-4986	20011
SCOIV	Telephone Systems Supervisor	366-6359	25008
		366-1998	
		366-5141	
	Leased Communications Liaison	366-2222	25008
	Telephone Support Center	366-5141	25008
	Telephone Support Center – FAX	366-1711	25008
	Telephone Trouble Desk	119	25008
SCOO	Section Chief, Cyber Systems Operations	366-5457	20011
	NCOIC, Cyber Systems Server Administration	362-4960	20011
	NCOIC, Cyber Surety	366-2601	20011
SCOS	Section Chief, Client Systems Team	362-4971	20011
	NCOIC, Comm Focal Point	366-2666	20011
	NCOIC, Client Systems Team	362-4718	20011
	NCOIC, Asset Management (PWCS)	366-3681	20011
	Base ADPE Control Officer	362-4950	21000
	Computer Maintenance Technician	366-2699	21000
SCOT	Section Chief, Transmission/Base Radio Systems	366-2308	20011

### 36th Contracting Squadron (CONS)

OFF SYM	OFFICE NAME	PHONE	BLDG
CC	Commander	366-4214	22026
LGC	Director of Business Operations	366-6608	22026
	Superintendent	366-6621	22026
CCF	First Sergeant	366-6621	22026
LGC	Secretary	366-4214	22026
	FAX	366-6615	22026
LGCP	Chief, Plans and Programs Flight	366-6680	22026
LGCP	Plans & Programs Flight - Systems	366-1702	22026
LGCA	Chief, Acquisition Flight – Construction	366-6622	22026
	Construction Flight - TEAM LEAD	366-6610	22026
	Construction Flight - TEAM LEAD	366-6614	22026
	Construction Flight - TEAM LEAD	366-6576	22026
LGCB	Chief, Acquisition Flight – Service & Commodities	366-2921	22026
	Services & Commodities Flight – Base Support	366-4947	22026
	Services & Commodities Flight – Operating Support	366-4943	22026

### 36th Logistics Readiness Squadron (LRS)

OFF SYM	OFFICE NAME	PHONE	BLDG
CC	Commander	366-4345	17000
CCS	Secretary	366-1797	17000
CCF	First Sergeant	366-4346	17000
CSS	Commander's Support Staff	366-1797	17000
		366-5242	
LGR	Operations Officer	366-3419	17000
LGRF	Manager Fuels Management Flight	366-5253	26203
	Fuels Management Flight Admin	366-4109	26203
	Superintendent, Fuels Management Flight	366-5267	26203
LGRP	Performance Assessment Flight Commander	366-2294	18001
	Superintendent, Vehicle Maintenance QAE	366-2009	18001
	Traffic Management	366-3066	18001
		366-2033	18001

LGRR	Commander, Readiness Flight	366-3398	17000	S3O	Operations Superintendent	366-5789	23020
	Superintendent, Readiness Flight	366-1760	17000	SOA-D	Flight Chief/Base Defense Operations Center (BDOC)	366-2472	23020
	Deployments	366-3290	17000		Base Defense Operations Center	366-2910	23020
	Deployment Control Center	366-3291	17000			366-2911	
		366-3278				366-2912	
	Receptions	366-2331	17000	S3T	NCOIC, Training	366-5789	23020
		366-3464					
	Support Agreements	366-1847	17000		Unit Training Manager	366-6786	23020
					Trainer	366-3443	23020
	War Reserve Materiel (WRM)	366-4950	17000			366-2499	
	FAX – Readiness Flight	366-3369	17000	TW	TW & Co Security	366-2672	23020
				DoN	Department of Navy, Program Manager	366-4545	23020

**36th Mission Support Group, Detachment 1  
(Diego Garcia – DSN Only) (36 MSG, DET 1)**

OFF SYM	OFFICE NAME	PHONE	BLDG				
CC	Commander	370-3800	DG				
	ADPE Control Officer	370-3908	DG	S4A	NCOIC, SF Armory	366-3110	23020
	Budget/Resource Advisor	370-3816	DG	SC	CATM Superintendent	366-8110	21000
	Munitions Guard House	370-3845	DG		NCOIC, Combat Arms	366-2254	23020
	Munitions Inspection	370-3845	DG		Combat Arms	366-3215	9625
	Munitions Maintenance	370-3845	DG	SM	Unit Deployment Manager	366-5817	23020
	Munitions Operations	370-3845	DG		UMD FAX	366-5817	23020
	NCOIC, Air Ground Equipment	370-3814	DG		NCOIC, Combat Arms	366-2254	21000
	NCOIC, Facilities Maintenance	370-3820	DG		Combat Arms	366-3215	9625
	NCOIC, Fuels	370-3899	DG	S4R	Resource Advisor	366-4507	23020
	NCOIC, Ground Radio	370-3908	DG	S4S	Supply Technician	366-5814	23020
	NCOIC, Logistics	370-3867	DG	S4V	Vehicle NCO	366-3101	23020
	NCOIC, Network Administration	370-3908	DG	S5	Chief, Plans and Programs	366-7202	23020
	NCOIC, Personnel	370-3801	DG		Superintendent, Plans and Programs	366-3444	23020
	NCOIC, Supply	370-3832	DG		NCOIC, Plans and Programs	366-4502	23020
	NCOIC, Transportation	370-3880	DG	S5B	NCOIC, Pass and ID (Visitor Center)	366-5650	2403
	Section Chief, Civil Engineering	370-3810	DG			366-7134	
	Section Chief, Communications	370-3908	DG	S5C	NCOIC, Resource Protection	366-3444	23020
	Section Chief, Munitions	370-3846	DG	S5E	Electronic Security Systems NCO	366-2871	23020
	Section Chief, Supply	370-3929	DG	S5L	Police Services NCO	366-2503	23020
	Vehicle Maintenance	370-3881	DG	S5R	NCOIC, Reports and Analysis	366-6781	23020
	FAX	370-4966	DG		Reports & Analysis Supervisor	366-6787	23020
					Reports & Analysis Clerk	366-4510	23020
					Main Gate	366-8005	2404
					Santa Rosa Gate	366-8006	1882
					DET 5 Entry Control Point	366-9111	34

**36th Security Forces Squadron (SFS)**

OFF SYM	OFFICE NAME	PHONE	BLDG
CC	Commander	366-4526	23020
CCS	Commander's Secretary	366-4523	23020
SFM	Security Forces Manager	366-4525	23020
SFMQ	NCOIC, Stan-Evaluation	366-2133	23020
		366-3204	
CCF	First Sergeant	366-4503	23020
CSS	Command Support Staff	366-8289	23020
CSA	Client Support Administrator	366-4505	23020
CSS	Unit Scheduler	366-4908	23020
	CSS FAX	366-3419	23020
S2	Wing Antiterrorism Officer	366-2435	23020
S2	NCOIC, Investigations	366-7098	23020
	Investigators	366-7142	23020
		366-6128	
S3	Operations Flight Commander	366-6704	23020

**DETACHMENT 3, 9th Operations Group (Det 3, 9 OG)**

OFF SYM	OFFICE NAME	PHONE	BLDG
CC	Commander	366-8806	18110
DO	Director of Operations	366-8814	18110
MX	Superintendent	366-8810	18110
	Maintenance Scheduling	366-1959	18110
	Quality Assurance Evaluator	366-8817	18110
	Supply	366-1951	18110
	CSA	366-8813	18110
L-3	Field Service Rep	366-1912	18110
NGC	Site Lead	366-8808	18110
	Deputy Site Lead	366-8805	18110

	Maintenance	366-8832	18110
	Quality Assurance	366-8835	18110
RES	Field Service Rep	366-8836	18110
RFC	Field Service Rep	366-1915	18110

LGTT	TMO Manager	366-3851	18002
		366-2038	
	Cargo Deployment Facility (CDF)	366-6915	18075
		366-6999	
	Air Cargo	366-3125	17003
	Inbound/Water Port	366-3872	18002
		366-6477	
	Outbound Freight	366-1162	18002
		366-3872	

**337th Air Support Flight (ASUF) Australia  
(DSN: 315 or COMMERCIAL: 011-61-2)**

OFF SYM	OFFICE NAME	PHONE	BLDG
CC	Commander	366-5677	AUS
		6214-5880	
JA	JAG	366-5679	AUS
		6214-5817	
	Law Office Manager	366-5679	AUS
		6214-5804	
FM	Chief, Financial Manager	366-5682	AUS
		6214-5979	
DP	Director, Personnel	366-5681	AUS
		6214-5821	
LGT	Chief, Transportation	366-5681	AUS
		6214-5610	
	NCOIC, Transportation	366-5681	AUS
		6214-5879	

**DZSP 21 (ENVIRONMENTAL)**

OFF SYM	OFFICE NAME	PHONE	BLDG
	Compliance	366-4967	21000
		366-4969	21000
		366-4970	21000
		366-6019	21000
		366-4966	21000
	Operations/Hazardous Waste	366-1881	18040
		366-1883	18040
		366-5062	18040
		366-8469	18040

**DZSP 21 (SUP)**

OFF SYM	OFFICE NAME	PHONE	BLDG
LGRM	Supply Manager	366-3112	18002
	Administrative Assistant	366-3723	18002
	Supply Supervisor	366-4163	18002
	Warehouse Supervisor	366-4771	18002
LGRMCC	Demand Processing/Customer Service	366-3702	18002
		366-3781	
		366-4666	
LGRMCE	Equipment Accountability Element	366-2559	18002
		366-3731	
LGRMMF	Reutilization/RPC	366-4164	18002
		366-4194	
LGRMP	Document Control/Inventory Accountability	366-4010	18002
		366-4020	
		366-4022	
LGRMPA	Procedures & Analysis	366-3735	18002
LGRMS	Stock Control	366-8202	18002
LGRMSH	HazMat	366-4771	18002
		366-4818	
		366-5336	
LGRMSI	Individual Equipment Element	366-5331	18002
LGRMSP	Mobility	366-3869	18002
		366-3870	
LGRMSS	Receiving	366-3771	18002
		366-3772	
	Storage & Issue	366-2191	18002
		366-8287	

**DZSP 21 (TRNS)**

OFF SYM	OFFICE NAME	PHONE	BLDG
LGRV	Transportation Manager	366-5828	18001
	Administrative Assistant	366-2070	18001
LGRVM	Maintenance Manager	366-2073	18001
	Vehicle Maintenance Supervisor, Light	366-4231	18001
	Vehicle Maintenance Supervisor, Heavy	366-7900	18001
	Vehicle Maintenance Supervisor, Heavy	366-6263	26229
	Allied Trades	366-3122	18042
		366-5236	
	Base Maintenance	366-6253	18035
	Corrosion Control	366-4107	21008
	Fire & Refueling Maintenance	366-6263	26229
		366-3461	
	General Purpose	366-6202	18001
	Special Purpose	366-3622	18001
	Customer Service/Mobile	366-6202	18001
	Maintenance/Production Control	366-1631	
		366-7097	
		366-9385	
		366-8037	
	Material Control Center (MCC)	366-2040	18001
		366-6376	
	Tools/Equipment – TO Library	366-6810	18001
LGRVO	Operations Manager	366-2021	18040
	Records & Licensing	366-3201	18040
	Dispatch	366-2239	18040
		366-7258	

**36TH CONTINGENCY RESPONSE GROUP (CRG)**

OFF SYM	OFFICE NAME	PHONE	BLDG
CC	Commander	366-4086	23008
CD	Deputy Commander	366-5718	23008
CCE	Executive Officer	366-2840	23008
CCS	Secretary	366-1015	23008
CEM	Chief Enlisted Manager	366-5662	23008
CCF	First Sergeant	366-5662	23008
CSS	NCOIC, CSS	366-5714	23008
	Personnel CSS	366-4036	23008
FM	Paying Agent/Resource Manager	366-2386	23008
TM	Group Training Manager	366-1502	23008
SGR	Division Chief	366-2124	23008
	Bioenvironmental Engineering Craftsman	366-2124	23008
	Independent Duty Medical Craftsman	366-2124	23008
		366-2275	

	IDMT	366-2124	23008	CCT	Unit Training Manager	362-6030	61313
	Public Health	366-2124	23008	DE	Engineering Flight Commander	362-4769	61313
IN	Division Chief	366-1307	25002		Project Engineer	362-6027	61313
	Superintendent, Intel Division	366-2318	25002			362-6026	
	Unsecured FAX	366-2022	25002	DEE	Construction Support Section Chief	362-6044	61313
	Intelligence Analyst	366-1056	25002		Design Support Section Chief	362-6041	61313
XP	Division Chief	366-2309	23008		Superintendent, Planning Section	362-6036	61313
	Superintendent, Plans & Programs	366-1564	23008		NCOIC, Procurement	362-3040	61313
	NCOIC, Plans & Programs	366-2821	23008	DO	Operations Flight Commander	362-6123	61315
	Log Plans	366-2207	23008		Chief of Operations	362-6102	61315
	Command Post	366-2268	23008		Director of Operations	362-6103	61315
		366-2076	23008		Construction Superintendent	362-6109	61315

### 36th Mobility Response Squadron (MRS)

OFF SYM	OFFICE NAME	PHONE	BLDG
CC	Commander	366-2597	23010
CSS	Information Management	366-2071	23010
	Journeyman		
	Unsecured FAX	366-2407	23010
	Work Group Manager	366-2337	23010
	Director of Operations	366-2046	23010
	Air Mobility Operations Flight	366-2079	23010
	Contingency Logistics Flight	366-2108	23010
	Contingency Communications Flight	366-2185	23010
	Contingency Engineering Flight	366-2160	23010
	Training	366-2079	23010

### 736th Security Forces Squadron (SFS)

OFF SYM	OFFICE NAME	PHONE	BLDG
CC	Commander	366-2189	23022
CSS	Information Management	366-6386	23022
	Journeyman/WGM		
	Unsecured FAX	366-6380	23022
SFM	Security Forces Manager	362-6545	23022
SFS	Assistant Administrator	366-3009	23022
SFS	Superintendent	366-2272	23022
SFS	S2 Ground Combat Info Cell	366-2403	23022
SFS	AT/FP NCO	366-2864	23022
SFS	S3 Operations	366-2113	23022
SFS	S4 Logistics, Superintendent	366-3425	23022
SFS	Resource Advisor	366-2866	23022

### 554 Red Horse Squadron (RHS)

OFF SYM	OFFICE NAME	PHONE	BLDG
CC	Commander	362-4944	61313
CD	Deputy Commander	362-6100	61313
CEM	Chief Enlisted Advisor	362-4911	61313
CCF	First Sergeant	362-4916	61313
CCA	Commander's Executive Support	362-4768	61313
CSS	Orderly Room	362-6015	61313
Strategic	Strategic Plans	362-6046	61313
RA	Resource Advisor	362-6115	61313
SE	Safety Manager	362-6031	61313

DOO	Operations Management	362-6114	61315
DOA	Superintendent, Airfields	362-6114	61315
DOAA	Airfields A-Flight	362-407	61315
DOAB	NCOIC, B-Flight (Batch Plant/Quarry Ops)		NWF Quarry
DOAC	NCOIC, C-Flight	362-6112	61315
DOA	Vehicle Control NCO	362-4907	61315
DOC	Superintendent, Cantonments	362-6105	61315
DOCE	NCOIC Electrical Systems	362-6110	61315
DOCH	NCOIC HVAC	362-6113	61315
DOCP	NCOIC, Power Production	362-6108	61315
DOCS	NCOIC, Structures	362-6106	61315
DOCU	NCOIC, Utilities	362-6107	61315
LG	Logistics Flight Commander	362-4900	61202
	Chief of Logistics	362-4903	61202
	Superintendent, Logistics Support	362-4901	61202
LGS	Section Chief, Supply	362-4921	61202
	NCOIC, Supply	362-4919	61202
	NCOIC, ESL Manager	362-4921	61202
LGSV	Section Chief, Force Support	362-4922	61202
	NCOIC, Force Support	362-4924	61202
LGVM	Vehicle Fleet Manager	362-4929	61202
	Superintendent, Vehicles Management	362-4902	61202
	Section Chief, VM&A Mat Control	362-4913	61202
	NCOIC, Mobile Maintenance	362-4908	61202
LGX	Section Chief, Readiness/UDM	362-4926	61202
LGXR	NCOIC, Emergency Manager	362-4927	61202
	LG Conference Room	362-4917	61202

### 644th Combat Communications Squadron (CBCS)

OFF SYM	OFFICE NAME	PHONE	BLDG
CC	Commander	366-5644	18011
CD	Deputy Commander	366-5635	18011
DO	Director of Operations	366-7599	25001
CEM	Chief of Enlisted Manager	366-5636	18011
CCF	First Sergeant	366-5607	18011
CYQ	Chief of Maintenance	366-5637	18011
	Maintenance Superintendent	366-5601	18011
CYC	Combat Support Flight Commander	366-5618	18011

	Combat Support Flight Superintendent	366-5618	18011		FAX	366-6343	21018
CYI	Infrastructure Flight Commander	366-4770	25001	SCO	Comm Operations NCO	366-8723	21018
	Infrastructure Flight Superintendent	366-3819	25001		Comm Help Desk	366-7796	21018
CYS	Transmission Flight Commander	366-4770	25001	LGE	Superintendent	366-6010	21015
CYS	Transmission Flight Superintendent	366-6577	25001	LGRM	Management Analyst	366-6140	21015
CYN	Network Ops Flight Commander	366-4450	25001	LGRMS	Program Coordinator	366-4011	21012
CYN	Network Ops Flight Superintendent	366-4448	25001		FAX	366-3455	21015

## ASSOCIATE UNITS

### DET 2, 21st Space Operations Squadron (DET 2, 21 SOPS)

OFF SYM	OFFICE NAME	PHONE	BLDG
CC	Commander	366-9182	34
DOC	Detachment Chief	366-9128	34
AF FAX	Det 2/21 SOPS FAX	366-9184	34
COO	Chief of Operations	366-9132	34
	COO FAX	637-7307	34
COS	Chief of Support	366-9140	34
RC	Resource	366-9180	34
SA	Security	366-9183	32
SM	Station Manager	366-9130	34
OPS	Operations Center	366-9150	34
		366-9170	
OPS	Operations FAX	366-9153	34
ARTS-A	ARTS	366-9113	34
ARTS-B	ARTS	366-9108	34
FAC	Facilities	366-9157	30
		366-9158	
HVAC	Air Conditioning	366-9222	34
LAN	LAN Manager	366-9134	34
		366-9139	
LOG	Logistics	366-9144	34
NSI	SCNC Integrator	366-9160	34
		366-9163	
PP	Power Production	366-9118	10
RBC	RBC	366-9155	
ECP	Entry Control Point	366-9183	32
	Conference Room	366-9169	34

### Headquarters (HQ/Air National Guard)

OFF SYM	OFFICE NAME	PHONE	BLDG
DOS	Director of Staff	735-0429	JFHQ Bldg 300
CCM	Command Chief Master Sergeant	366-7788	21018
ESGR	Employer Support of the Guard/ Reserve	735-0456	JFHQ Bldg 300
PA/A1/HRAS C/JA/HLS	Air Guard Headquarters Staff	735-0464	JFHQ Bldg 3000
	FAX	734-4081	JFHQ Bldg 300

### 254th Air Base Group (ABG/Air National Guard)

OFF SYM	OFFICE NAME	PHONE	BLDG
CC	Commander	366-7778	21018
CSS	Commander's Support Staff	366-7140	21018

### 254th Comptroller Flight (CPTF/Air National Guard)

OFF SYM	OFFICE NAME	PHONE	BLDG
CC	Commander	366-3907	21018
FMA	Financial Budget Analyst	366-3906	21018
FMF	Military Pay and Travel	366-3447	21018
		366-3448	
FMF	Accounting Liaison Officer	366-3449	21018
	FAX	366-4064	21018

### 254th Red Horse Squadron (RHS/Air National Guard)

OFF SYM	OFFICE NAME	PHONE	BLDG
CC	Commander	366-2998	21012
CSS	Commander's Support Staff	366-4000	21012
CEM	Chief Enlisted Manager	366-2677	21012
AO	Administrative Officer (CIV)	366-7776	21012
LGS	Inventory Mgmt NCO	366-7808	21012
FM	Facility Manager	366-7801	21012
DOCP	Infrastructure Tech	366-7801	21012
DOT	Unit Education & Training Manager	366-3454	21012

### 254th Force Support Squadron (FSS/Air National Guard)

OFF SYM	OFFICE NAME	PHONE	BLDG
	Customer Service	366-2297	21018
FSM	Manpower and Personnel, Chief	366-7786	21018
FSMP	Military Personnel Section, Superintendent	366-1106	21018
DPR	Recruiter	366-7794	21018
FSMPD	Retention Office Manager	366-7791	21018
FSD	Force Development, Superintendent	366-7783	21018
FSFR	Airman & Family Readiness Program Manager	366-5437	21018
YRRC	Yellow Ribbon Program Coordinator	366-7792	21018
	FAX	366-6343	21018
FSV	Sustainment Services Flight, Superintendent	366-7781	21058
FSOT	Unit Training, NCOIC	366-7124	21015
	FAX	366-6023	21015

### 254th Security Forces Squadron (SFS/Air National Guard)

OFF SYM	OFFICE NAME	PHONE	BLDG
SFM	Security Forces Manager	366-4994	21015
S3T	Unit Training Manager	366-3501	21015
SPC	Special Projects Coordinator	366-3501	21015

734th Air Mobility Squadron (734 AMS)			
---------------------------------------	--	--	--

OFF SYM	OFFICE NAME	PHONE	BLDG
CC	Commander	366-7341	19028
DO	Director of Operations	366-7343	19028
CCE	Executive Officer	366-2250	19028
CCS	Secretary	366-2150	19028
CCC	Squadron Superintendent	366-7344	19028
CCF	First Sergeant	366-7342	19028
CCS	Command Staff Admin	366-2248	19028
QA	Superintendent, QA	366-8130	19028
SE	Safety, NCOIC	366-2899	19028
CCX	Budget Analyst	366-3193	19028
	Chief, Combat Readiness/Resources Superintendent	366-1449	19028
	Security Manager	366-7290	19028
	Squadron Vehicle Control Officer	366-4920	190281902819028
	Unit Deployment Manager	366-3192	19028
CCXN	Computer Manager	366-6212	19028
	Facility Manager	366-7306	19028
	GATES System Administrator	366-7290	19028
	NCOIC, GATES Administrator	366-7289	19028
	LAN Administrator	366-7290	19028
C2	Superintendent	366-9952	23028
	NCOIC, Console Operations	366-2981	23028
	NCOIC, Training	366-2981	17002
MXA	Operations Officer	366-7345	19028
	Superintendent	366-7346	19028
MXAA	Aircraft Maintenance Unit	366-1903	19028
	Maintenance Superintendent	366-7346	19028
	Production Superintendent	366-6074	19028
MXAF	NCOIC, Forward Supply Location	366-2115	19028
MXAM	NCOIC, Maintenance & Analysis	366-3104	19028
MXAO	NCOIC, Maintenance Operations Center	366-3124	19028
MXAQ	Chief, Inspector QA	366-8131	19028
	NCOIC, Tech Order Dist	366-8132	19028
MXAS	NCOIC, Aircraft Support	366-2188	19028
MXAT	Maintenance Training Manager	366-7300	19028
TRO	Aerial Port Operations Officer	366-7347	17004
	Superintendent	366-1712	17004
	Air Terminal Manager	366-7348	17004
TROO	OIC, Air Terminal Operations Center	366-7220	17004
TROK	NCOIC, Standardization & Evaluation	366-5830	17004
	Standardization & Evaluation	366-5830	17004
	OIC, Air Freight Flight	366-7182	18013
	Superintendent	366-5223	18013
	Air Freight Dispatch	366-7678	18013
	NCOIC, Aircraft Services	366-4265	18013
TROKS	NCOIC, Special Planning	366-5334	18013
TROO	Superintendent, Air Terminal Operations Center	366-6073	17002

	Air Terminal Operations Center	366-6073	17002
	Data Records	366-7285	17002
		366-7276	
TROP	OIC, Passenger Services	366-2097	17002
	Superintendent Passenger Service Flight	366-2097	17002
	Recorded Flight Information	366-2095	17002

Army and Air Force Exchange Service (AAFES)			
---	--	--	--

OFF SYM	OFFICE NAME	PHONE	BLDG
AAFES	Main Store	653-1136	24016
		653-1141	
	Customer Service	653-1141	24016
		653-1136	
	General Manager	653-6210	24016
	Human Resources	653-4085	24016
	Service Business Manager	653-8179	24016
	Barber Shop	653-8599	24016
	Baskin Robbins	653-0545	24016
	Burger King Express	653-0782	27030
	Car Care Center	653-9386	26051
		653-2886	
	Charley's Steakery	653-0545	24016
	Computer Repair	653-7669	24016
	Dunkin Donuts	653-0544	24016
	Exchange New Car Sales	653-7741	25005
	Food Court	653-0545	24016
	Food Court Manager	366-3120	24016
	Gas Station	653-4677	26101
	Gas Station (National Guard)	734-1409	Barr
	GTA Teleguam	653-6266	24016
	IT&E	922-1000	24016
	Jewelry Counter	654-3737	24016
	Military Clothing Sales	653-8624	24016
	NAPA Rep	653-5391	26101
	New Car Sales	653-3155	24016
	National Car Rental	653-7368	17002
	Petals & Bloom (Flower Shop)	653-7200	24016
	Pizza Hut	653-4812	24016
	Popeye's	653-0533	24016
	Power Zone	653-3736	24016
	Rosewood Shop	653-3443	24016
	Saipan Troop Store	670-322-6681	Saipan CNMI
	Shoppette	653-8143	25005
	Shoppette (National Guard)	734-0902	Barr
	Stripes (Alterations)	653-8595	24016
	Stylique (Beauty Shop)	653-8598	24016
	Subway	653-6775	24016
	Taco Bell	653-4817	24016
	The Spa	653-7858	24016
	Video Rental	653-8144	25005
	Vitamin World	653-2547	24016

**American Red Cross (ARC)**

OFF SYM	OFFICE NAME	PHONE	BLDG
ARC	American Red Cross	472-6217/9	Agana
	American Red Cross, Navy Liaison	344-9040	21000
	American Red Cross (Emergency Service)	1 877-272-7337	
	American Red Cross (After Duty Hours)	639-0009	Kadena OPR

**Defense Commissary Agency (DECA)**

OFF SYM	OFFICE NAME	PHONE	BLDG
DECA/AAFB	Commissary ACS	366-3967	22021
	Store Director	366-5134	22021
	FAX	366-6216	22021
	Bakery	366-4782	22021
	Customer Service	366-5159	22021
	Grocery Manager	366-5136	22021
	ID Check Desk	366-2264	22021
	Meat Department	366-3294	22021
	Produce Manager	366-5210	22021
DECA/OROTE	CDC Manager	339-5678	3201
	Store Director	339-5177	275
	Customer Service	339-7156	275
	FAX	339-3246	275

**Air Force Office of Special Investigations (AFOSI DET 602)**

OFF SYM	OFFICE NAME	PHONE	BLDG
CC	Commander	366-2987	21000
SUPT	Superintendent	366-2830	21000
KOM	Knowledge Operation	366-2987	21000
CI	Counterintelligence Branch	366-2987	21000
CRIM	Criminal Branch	366-2987	21000
	Eagle Eyes HOTLINE	366-9871	21000
AFOS I	FAX	366-2989	21000

**Defense Courier Service (DCS)**

OFF SYM	OFFICE NAME	PHONE	BLDG
DCS	Defense Courier Service Station	366-3138	17003
DCS	Defense Courier Service Station	366-3139	17003
DCS	Defense Courier Service Station FAX	366-2400	17003

**44th Aerial Port Squadron (44 APS)**

OFF SYM	OFFICE NAME	PHONE	BLDG
CC	Commander (TR)	366-3361	17005
CCF	First Sergeant (TR)	366-1513	17005
TRO	Transportation Manager	366-1416	17005
KOM/CSS	Knowledge Operations Management Superintendent	366-3142	17005
DPM/CSS	Personnel Superintendent	366-3144	17005
DPMT	Training Superintendent	366-3360	17005
RS	Air Force Reserve Recruiter	808/448-3804	Hawaii

**624th Aerospace Medicine Squadron (624 AMDS)**

OFF SYM	OFFICE NAME	PHONE	BLDG
CC	Commander	366-5683	21000
SGA	NCOIC, Health Service Management (AGR)	366-5400	21000
SGN	Nursing Services	366-4612	21000
	NCOIC, Aerospace Medical (ART)	366-4640	21000
SGY	Dental Services	366-4664	21000
DPMT	Training Manager	366-4605	21000

**DET QD7H/Area Defense Counsel (ADC)**

OFF SYM	OFFICE NAME	PHONE	BLDG
ADC	Area Defense Counsel	366-2281	28001
ADC	FAX	366-6648	28001

**Domestic Dependents Elementary and Secondary Schools (DDESS)**

OFC SYM	OFFICE NAME	PHONE	BLDG
	Superintendent (Navy)	344-9578	
	Andersen Elementary	366-1511	
	Andersen Middle	366-3880	
	McCool Elementary/Middle (Navy)	339-5347	
	Guam High	344-7410	
	Bus Operations (Andersen)	366-1522	
	Bus Operations (Navy)	344-5274	
	Nurse (Elementary)	366-2136	
	Nurse (Middle)	366-5979	

**Helicopter Sea Combat Support Squadron TWENTY-FIVE (HSC-25)**

OFF SYM	OFFICE NAME	PHONE	BLDG
N00	Commanding Officer	366-3641	2641
N01	Executive Officer	366-3642	2641
N001	Command Master Chief	366-6434	2641
N002	Legal Officer	366-6460	2641
N002A	Paralegal	366-6460	2641
N003	Command Career Counselor	366-6429	2641
	FAX	366-2487	2641
N004	Flight Surgeon	366-2275	26000
N004A	DAPA	366-5882	2641
N004A	Flight Medicine	366-5011	2641
N00Y	CO's Yeoman	366-6431	2641
	CO's Yeoman's FAX	366-1251	2641
N10	Admin Officer	366-6485	2641
N11	Assistant Admin Officer	366-6485	2641
	FAX	366-6425	2641
N111	Admin LCPO	366-6427	26000
N111A	Admin LPO	366-6480	26000
N111B	Awards YN	366-6431	2641
N111C	Travel YN	366-3007	2641
N111F	Customer Service YN	366-2836	2641

OFF SYM	OFFICE NAME	PHONE	BLDG
N12	Public Affairs	366-6430	2641
N13	Physical Security Office	366-4451	2641
N14	1st Lieutenant Division Office	366-4451	2641
N14A	Barracks Officer	366-2380	25009
N14B	Barracks BPO	366-2383	25009
N16	ESO	366-6419	2641
N17	DETLO	366-6435	2641
N30	Operations Officer	366-6423	2641
N31	Assistant Operations Officer	366-6422	2641
N32	Flight Officer	366-6422	2641
N33	SAR Officer	366-6408	2641
N34	Schedules	366-6422	2641
N36	COMM Officer	366-4024	2641
N36B	COMM/ADP LPO	366-6416	2641
N36C	Operations YN	366-6419	2641
N36D	COMM/ADP Work Station	366-6416	2641
N36E	COMM Officer/ADP Vault	366-4024	2641
N40	Maintenance Officer	366-2218	2641
N401	Asst Maintenance Officer	366-5300	2641
N401A	Maintenance Admin	366-6446	2641
	Maintenance Admin FAX	366-2753	2641
N41	Supply Officer	366-3958	2642
N41A	Supply LCPO	366-3957	2642
	Comptroller/Budget	366-3955	2642
N41B	LPO	366-3956	2642
N402	MMCO	366-6444	2641
	Maintenance Master Chief	366-5627	2641
	Materiel Control	366-2028	2641
	TD/SEATS/SESS	366-5625	2641
	Data analyst	366-5625	2641
N404	QA Officer	366-5369	2641
	QA	366-6441	2641
	QA Supervisor/LPO	366-6442	2641
N05	Materiel Control Office	366-5628	2641
	Materiel Control CPO	366-2028	2641
	Materiel Control FAX	366-4012	2641
	HazMat	366-4152	2641
	CTPL	366-5540	2641
	Maintenance Training	366-6446	2641
	Logs & Records	366-5625	2641
	IMRL/Tool Control	366-6453	2641
	Paraloft	366-6469	2641
	AO Vault	366-5218	2641
	AO Shop	366-6443	2641
	Sikorsky Tech Rep	366-6448	2641
N411	CSS/Stock Supervisor	366-3942	2642
N413	SRS Supervisor	366-3944	2642
	PMU	366-3944	2642
	RCO	366-3946	2642
	RMS	366-3955	2642
N413	Warehouse	366-2434	2642
	Shipping	366-3943	
<b>HSC-25 Aircraft Intermediate Maintenance Department (HSC-25/SUPPLY/AIMD)</b>			
N42	Maintenance Officer	366-6937	2642
N422	MMCO	366-3373	2642
N42A	Production Control	366-6466	2642
N422B	Materiel Control	366-2817	2642
N422C	AMO	366-5300	2642
N422D	IMRL/HazMat	366-6487	2642
N423	DATA Analyst	366-6466	2642
N424	QA Division	366-7976	2642
	QA/A	366-3375	2642
	CTPL	366-3375	2642
N425	Gen Maintenance DIV OFF	366-1466	2642
	Airframes	366-7395	2642
	Paraloft/ALSS	366-2577	2642
N425A	BLD/HYD/NDI/T&W	366-7450	2642
N425C	Avionics	366-6464	2642
	Support Equipment	366-1317	2642
N429	Support Equipment DIVO	366-1316	2642
N429A	IMRL/Calibration/HazMat	366-6487	2642
	FAX	366-6468	2642
N45	Safety Officer	366-6414	2642
N450A	Safety Chief	366-3982	2642
N451	Aviation Safety Officer	366-6318	2642
N452	NAVOSH Officer	366-6318	2642
N452A	NAVOSH Petty Officer	366-3982	2642
N453	NATOPS Officer	366-6408	2642
N453A	NATOPS Petty Officer	366-6436	2642
N612	Detachment One	366-4013	2642
N616	Det One DIVO	366-6452	2642
N624	Detachment Two	366-5455	2642
N626	Det Two DIVO	366-6452	2642
N631	Detachment Three	366-2750	2642
N636	Det Three DIVO	366-6452	2642
N641	Detachment Four	366-4015	2642
N646	Det Four DIVO	366-6452	2642
N651	Detachment Five	366-4008	2642
N656	Det Five DIVO	366-6452	2642
N61	Line Shack DIVO	366-6575	2642
	Home guard DIVO	366-4565	2642
	Mustang Corner	366-2007	2642
N66	Line Shack	366-6575	2642
	Detachment Seven	366-6575	2642
N80	Training Officer	366-6408	2642
N81	Asst Training Officer	366-6408	2642
N82	Pilot Training Officer	366-6408	2642
N83	Ground Training Officer	366-6408	2640
N84	Aircrew Training	366-6408	2642
	SAR Officer	366-6408	2642
N86	Tactics Officer	366-5246	2642



# Team Andersen Telephone Directory Miscellaneous Listings

## NAVY HOSPITAL

Admissions	344-9356
Appointments	344-9202
Chief of the Day/Information	344-9340
Dental Clinic	344-9493
Dermatology	344-9422
Emergency Room	344-9314
Family Practice	344-9461
Maternity/Labor & Delivery	344-9307
OB/GYN Clinic	344-9775
Optometry/Eye Clinic	344-9212
Orthopedic Clinic	344-9315
Pediatric Clinic	344-9231
Poison Control	344-9232
Primary Care Clinic	344-9649
Radiology (X-Ray)	344-9274

## NAVAL STATION (BIG NAVY)

Defense Reutilization & Marketing Office (DRMO)	339-5227
POV Shipping/Pickup	339-2205

## NAVY EXCHANGE (NEX)

Auto Service Center	339-2886
Home Gallery	564-3205
Main Store	564-3178
NEX II Lawn & Garden/Toyland	564-3212
Shoppette (NCTS)	355-3040

## NAVY COMMISSARY

Commissary Officer	339-5177
Customer Service Manager	339-5173

## CHILD CARE

Andersen Child Development Center	366-1601
	366-1603
Navy Child Development Center	564-1844
	564-1845

## GPSS/PRIVATE SCHOOL

Academy of Our Lady	477-8203
Evangelical Christian Academy	734-3241
Father Duenas Memorial School	734-2261
FB Leon Guerrero Middle School	653-2080
Guam Adventist Academy	789-1515
Harvest Christian Academy	477-6341
Notre Dame High School	789-1676
Santa Barbara School	632-5578
Simon Sanchez High School	653-2313
Southern Christian Academy	565-7020
St. John's School	646-8080
St. Paul Christian School	653-1311
Temple Christian School	477-9507
Upi Elementary	653-1382

## MISCELLANEOUS

Department of Motor Vehicle	635-1755
Guam Police Department (24 HRS)	472-8911
Guam Power Authority	649-6930
GTA Teleguam	644-4482
Immigration Office	472-7349
DOCOMO Cable	688-2273
Social Security Administration	635-4433

## VETERANS AFFAIRS

VA (Federal) Local Office	475-5760
---------------------------	----------

## UNIVERSITY/COLLEGE

Navy College (NBG)	339-8291
University of Maryland (NBG)	564-2304
Central Texas College (AAFB)	366-7133
University of Maryland (AAFB)	366-7132
University of Oklahoma (AAFB)	366-5275
University of Phoenix	366-6226

# Team Andersen

## Telephone Directory

### Quick Reference Numbers

Accounting & Finance	366-1770	Immunization Clinic	366-6100
Airman & Family Readiness Center	366-8136	ITT	366-1476
Airman's Attic	366-8217	Laboratory	366-6240
Auto Hobby Shop	366-2745	Law Enforcement Desk	366-2910
Bank of Guam	653-8371	Legal Office	366-2937
Barber Shop	653-8599	Library	366-4291
Base Operations	366-4188	Life Skills	366-5125
Base Exchange	653-1141	Lodging	979-5501
Beauty Shop	653-8598	Magellan Inn	366-6368
Car Care Center	653-9386	Main Gate	366-8005
		Santa Rosa Gate	366-8006
Chaplain	366-6139	Medical Clinic	
Non-Duty Hours	366-2981	Appointment Desk	366-9355
		Dental	366-6750
Child Development Center	366-1602	Immunization	366-8219
		PHA	366-7427
Commissary	366-5159	Outdoor Recreation	366-5197
Consolidated Club	366-6166	Palm Tree Golf Course	366-4653
Education Center	366-3170	Pentagon Fed Credit Union	653-6555
Food Court	366-3120	Pet Lodge & Quarantine Facility	366-5020
	653-0545		
Charley's Steakery	653-0545	Pool (Capehart)	366-3202
Dunkin Donuts	653-0545		
Pizza Hut	653-4812	Public Affairs	366-4202
Popeye's	653-0545		
Subway	653-6775	SATO Travel	653-1130
Taco Bell	653-4817	Fax	366-5272
Gas Station	653-4677	Shoppette	653-8143
Gecko Lanes	653-9713	Theater	366-1523
Gymnasium	366-6100	Veterinary	366-7133
Hot Spot	366-2399	Visits Control Center	366-5651
Housing Maintenance	366-6240	Weather	366-7132
Housing Office	366-2127	Youth Center	366-3491
Human Resources		Visits Control Center	366-5651
AAFES	653-4085		
Civil Service	366-3677	Weather	366-7132
NAF	366-6141		
Gymnasium	366-6100		
Hot Spot	366-2399		
Housing Maintenance	366-6240		
Housing Office	366-2127		